

The Telegraph Key

An NMRA Sunshine Region Monthly Publication

March 2024



Sunshine Region - NMRA

Where modelers come to share, develop, and learn new skills.

Welcome to the best region under the sun!

2023 Sunshine Region Convention
Convention Registration

WWW.NMRA SunshineRegion.org





Contents

Editor's Message.....	3
Your Questions & Answers	4
President's Message	5
Treasurer's Message.....	7
Achievement Program	8
Northern Division.....	8
Eastern Division.....	9
Western Division	11
Southern Division.....	11
Website Enhancements	13

Sunshine Region Officials

- President, Andy Zimmerman:
ssrpmez@nmra.org
- Vice President, Mark Lewalski:
vwtrainsailor@gmail.com
- Secretary, Eric Menger:
emenger77@gmail.com
- Treasurer, Glenn Kopriva:
glennkopriva@yahoo.com
- Director at large, Jim Robertson:
jnr@tampabay.rr.com
- Director at large, Ken Hoot:
hootk@bellsouth.com
- Director at large, Paul Beckstrom:
paulbeckstrom1948@gmail.com
- Director at large, Jeff "Ski" Guzowski:
jguzowski@bellsouth.net
- Northern Div. Super, Robert Feuerstein:
photobob321@gmail.com
- Eastern Div. Super, Jim Moore:
jim@moore-associates.net
- Southern Div. Super, Robert Leonard:
leonardstrait@gmail.com
- Western Div. Super, Don Wetmore:
stjoeterminal@mail.com
- Achievement Program, Ken Hoot:
hootk@bellsouth.net
- Model Contest, Benita Jameson:
bnferrco1@gmail.com
- Journal Box Editor, Robert Leonard:
leonardstrait@gmail.com
- Telegraph Key Editor, Mark Lewalski:
vwtrainsailor@gmail.com

Editor's Message



This issue of the Telegraph Key kicks off our new **Q&A** section. We received our first question and instead of the TK editorial staff (that would be me...) coming up with the answers, I would like the you readers to take an active part and supply them. Please submit answers to nmra_sunshineregionmail@yahoo.com and I'll get them added in the next issues. Also, please submit your questions – we have a vast knowledge base across the Region that should be able to come up with answers for you. Look for the Q&A section further on in this edition.

****REGION ELECTIONS****


Sunshine Region elections are coming up soon and this is the time to consider running for any of these positions. This includes any of the Board positions: President, Vice President, Treasurer, Secretary, and the four Directors. It also includes any of the Division Superintendent positions: North, South, East, or West. If you are interested, please prepare your Bio and email it to the SSR President at ssrprez@nmra.org. **April 30th is the deadline for submitting your Bio and the position that you are running for.**

Mark Lewalski

Editor, Telegraph Key

FIRST COAST MODEL RAILROAD SOCIETY

HO & On30 SCALES DIGITRAX DCC




1414 Millcoe Road, Unit 2105
 Jacksonville, FL 32225
 Richard Paul
 Home -(904) 223-5133
 Cell - (904) 616-8110
fcms46@gmail.com

The Gallery of Industrial
 Marine and Urban Models
Fine Scale Models in HO Scale

Ray Del Papa
 Builder

754-423-0051
mrrratpp@aol.com



Your Questions & Answers



Welcome!

Our first question comes from **Mark** in the Western Division:

“What are the lengths of covered hoppers used to transport plastic pellets and what year were they first used in service?”

Our second question comes from **Matthew** also in the Western Division:

“Do you have or know of anyone near the Tampa Bay/Dade City area who does minor repairs to Hornby Model Trains?”

If **you** can help with an answer, please email me at vwtrainsailor@gmail.com. Thanks for

Mark Lewalski

Editor, Telegraph Key

Ving Bena Model Railroad Association

33rd Annual Tallahassee Model Railroad Show and Sale

June 22nd & 23rd 2024 at the North Florida Fairgrounds

Featured Vendors:

- T-TRAK NHOJO Scale Modular Railroading
- T-TRAK-Z Z-Scale Modular Railroading
- MUD-CRAB MODELS
- MOTRAK MODELS
- Rail Scale Models
- Tucker's Train Supply
- Notify Me!!

President's Message



Here we are, it is March already! We are closing in on the end of the 1st quarter and my third month as your President. As I compose this, I find myself reflecting on our past, present, and future paths. Contemplating how best to guide this team and our membership toward becoming a robust and inclusive organization, one that people eagerly join. The tone of our message—Mentorship, Fellowship, and Community—is attracting individuals passionate about Model Railroading and community building again! This is not the SSR of yesteryears; our current leadership is characterized by collaboration, transformation, trustworthiness, and inclusivity. Extending this philosophy to all members, new and old, is paramount. We must reach out to former members who have disengaged and entice them back by demonstrating how far we have come.

Our aspiration is to be the envy of other regions, known for doing the right thing at the right time for the right reasons. How can you, as members, contribute to this vision? Reflect for a moment. Recognize that we are a team of volunteers, and our success relies on collaborative endeavors. If you have taken issue with something, address concerns privately rather than resorting to public forums, speculating at events, or meetings. Reach out, we strive for transparency, and while some constraints exist, we are committed to answering your questions to the best of our ability.

Secondly, let's minimize criticism, complaints, and condemnation, ideally eliminating them entirely. Harmonious collaboration is paramount, and dwelling on past errors or engaging in backbiting hinders progress. Negativity often stems from incomplete information, assumptions, and rhetoric. To address this, I am arranging an all-hands meeting via Zoom where you can interact with leadership, superintendents, and possibly participate in clinics. Look for an announcement soon.

Whether at ops sessions, meets, gatherings, or online, contemplate before expressing thoughts. Assess if your words contribute positively or hinder progress. If it's the latter, consider refraining or not articulating that message. If written, contemplate rewriting or even deleting it. Corrections are best made one-on-one rather than publicly.

Exercise patience to prevent burnout among team members. Encourage and empower those around you, fostering a collaborative and mentoring culture. Focus on constructive solutions that uplift rather than tear down individuals.

The recent loss of Robert Gangwish, a member embodying these attributes, serves as a reminder of the positive impact we can have. Let's get the message out—we are growing, moving forward, and transforming into the inclusive community we envisioned. As Margaret Mead once said, "Never underestimate the power of a small group of committed people to change the world. In fact, it is the only thing that ever has." Our commitment to making the SSR a premier region is steadfast, and with your help, we will undoubtedly achieve that goal. Look at how far we've come already!

Best regards,

Andy Zimmerman

President



Fun, Friends, Trains

4042 Deltona Blvd.
Spring Hill, FL 34606

352-684-2484

Email: dana@danarailroadsupply.com

Web Site: danarailroadsupply.com

**TRAIN SETS • KITS • PARTS • DECALS • DIGITRAX
PAINTS • BOOKS • REPAIRS • LIONEL • SHIP & AIRPLANE MODELS**

South Florida Railway Museum

Beginning January 2024

New Hours

**The museum will be open from 11 AM to 4 PM on the
2nd Saturday of the month**

Dates

**01-13, 02-10, 03-09, 04-13, 05-11, 06-08, 07-13,
08-10, 09-14, 10-12, 11-09, 12-14**

Follow us on our website www.sfrm.org and our
Facebook page

Call 561 441 6952 for more information

1300 W. Hillsboro Blvd. Deerfield Beach, FL
(The south end of the AMTRAK station in Deerfield Beach)



Home of the

**South Farmington
Rail & Mule RR**

Treasurer's Message



All, I wanted to thank so many of our members that decided to donate their Journal Box refund back to the Region. Over 86% of you elected to do so, the Region greatly appreciates your donation and I really do as it means very few checks to send out 😊. All refunds that were asked for have been mailed. If you asked for a refund and still have not received it, please email us below and we will research it and provide you a status.

If you feel you are due a refund for any remaining Journal Box issues and have not been contacted, please contact us at the below email address (you will need to provide copies of your credit card payment or canceled check so we can verify the purchase). Keep in mind, the Journal Box has NOT ceased publication, it has just gone digital and is available on our website to read or download as you prefer and is now available to ALL for free.

We are beginning to look at this years' upcoming convention – changes are afoot – hmmm, I wonder what the changes will be – please email us below with changes or additions you would like to see!! This is our convention – let's make it fun, some fellowship and some learning. Next month's Telegraph Key will have more details so please email us with any thoughts/ideas/needs/brainstorms/clinics /dislikes you may have, I will add them to my article next month. We want this to be the best convention we've had and need and want your input.

EMAIL US AT: NMRA_SUNSHINEREGIONMAIL@YAHOO.COM

Thanks everyone!

Glenn Kopriva

Treasurer



The Western Bay Railroad is a 950 square ft On30 layout in Port St Lucie. We meet almost every Tuesday evening. We are looking for new members to join our group. There are OP sessions & scenery that we are still working on. If you're a modeler and serious about learning, give us a try! Go to our website or contact Al Sohl MMR als0622@yahoo.com

'No dues, just a great experience'
westernbayrailroad.org



Achievement Program



Ken doesn't have anything new to share this month.

Ken Hoot

Achievement Program Chair

Northern Division

Events



March 2024, Woodville Founder's Day, Woodville, FL. Exact date to be announced later. BBMRA set-ups.

March 2024 every Sunday, First Coast Model RR Society Open Running Florida, Jacksonville (Beaches)--First Coast Model RR Society open, ruining every first 3 Saturday and 4th Saturday is reserved for closed invite only Ops sessions. Operational 750 sq ft double-level freelance mixed era HO layout 50% complete. Meet On30 modular layout members. Gated location near I295 & Monument Rd. Contact 24-48 hours prior to visit. John Piselli jpmickey@att.net. www.FCMRS.club, See club at YouTube (FCMRS); <https://www.facebook.com/groups/471801286331141/>,

Northern Division

The Northern Division planning session was held to assess ideas of how to promote new membership in the Sunshine Region of NMRA. Suggestions were for each of the club areas to schedule layout tours and advertise them to entice new members and inactive members to join the group. The Northern Division has reorganized and is moving in a positive direction.

Master Modelers Certification

BBMRA members Neal Meadows and Stacey Elliott attended their second operating session in 2024 involving 10 members from the Northern Division. Neal and Stacey are working on their hours for operations and dispatching toward a Master Modelers Certification.

First Coast Model RR Society Open Running.

Florida, Jacksonville (Beaches)—First Coast Model RR Society open, running every Sun. Operational 750 sq ft. Double-level freelance mixed era HO layout 50% complete. Meet On30 modular layout members. Gated location near I295 & Monument Rd. Please contact us 24 - 48 hours before your visit.

John Piselli jpmickey@att.net. www.FCMRS.club, See the club on YouTube (FCMRS).

<https://www.facebook.com/groups/471801286331141>.

Robert Feuerstein

Northern Division Superintendent

Eastern Division



Greetings.

Spring will soon arrive bringing with it several events of possible interest to model railroading enthusiasts throughout the Eastern Division. The list which follows is just a sample. So, if you know of other upcoming events, email me details for possible inclusion in a future issue of the *Telegraph Key*.

March 6, 2024. Melbourne Train Show. 900 am – 300 pm. Operating layouts and dealer tables. Azan Shrine Center, 1591 West Eau Gallie Blvd., Melbourne. (Same event/location: June 1, 2024).

March 16, 2024. Regal Railways Toy Train Show. 900 am – 300 pm. Knights of Columbus, 2000 Neptune Road, Kissimmee. Admission.

April 6, 2024. NMRA Sunshine Region/Eastern Division. No-cost cookout. 11 am – 300 pm. Informal meet-and-greet. An opportunity for fellowship and discussion of possible future activities within the Eastern Division. RSVP: Jim Moore (jim@moore-associates.net).

April 6, 2024. Model Train & Artifact Show and Sale. 900 am – 400 pm. Volusia Co Fair Grounds, 3150 East New York Avenue, Deland. 85 dealers, 200-plus tables, two large operating layouts (Orlando N Trak and First Coast Model Railroad Club, JAX). Admission.

June 2024. Eastern Division “meet”. Plans include four clinics, model displays, and on-site lunch. 830 am to 300 pm. Possible dates: June 8 or 15, 2024. Volunteers needed. Contact Jeff “Ski” Guzowski (SSR Director-at-Large) at jguzowski@bellsouth.net. Preferred location: Kissimmee - St. Cloud area.

Treasure Coast Model Railroad Club. Open to the public every Saturday, 1000 am to 1200 pm. 273 SW Becker Road, Port St. Lucie. Free admission. Club is ADA-accessible. Contact: tcmrrclubflorida@gmail.com.

Western Bay Railroad Club. Port St. Lucie. On30 DCC-controlled model railroad inspired by the Denver & Rio Grande and Rio Grande Southern railroads circa 1939. Operations feature a 4:1 “fast clock” and two-way radio dispatching. Contact: Al Sohl (als022@yahoo.com).

Southeast Chapter - European Train Enthusiasts. Hosts periodic Zoom meetings. March 19: Spring rail trip, Orlando – Miami (return). Contact: Kurt Amstutz (kurt.amstutz@gmail.com).

This and that...

The Villages Train Show and Sale. Crossed into the Northern Division for a February 3, 2024 visit. Large sales hall. All scales. New and pre-owned items. Free parking. Admission (discount with postcard). Next show: September 21, 2024.

CSX Wildwood. Enroute to The Villages Train Show, drove past the former Seaboard/Amtrak station on US 301. Now the subdivision offices. Small yard. Noted several covered hoppers therein. Thanks to the internet, located several color photos of historic passenger rail activity at this station.

RPM Cocoa Beach. Spent an enjoyable early January weekend attending informative clinics, meeting many fellow modelers and rail enthusiasts, and viewing dozens of top-notch models. If you have yet to do so, highly recommend attending the 2025 conference.

Have you recently embarked on a new model railroading project, discovered a new hobby product, or identified a useful tip? Send along for possible inclusion in a future issue of the *Telegraph Key*.

Given my recent focus on building an era-appropriate freight car fleet, a couple of tips from *MR* contributor Bob Kingsnorth proved useful. Bob suggests using a piece of corrugated cardboard as a jig for spray painting HO scale couplers. He inserts coupler shanks into the corrugations which also protects the shanks from overspray. Similarly, Bob cuts slits in corrugated cardboard to use as a jig/holder for truck frames. The jig holds the trucks in place while protecting the center of the bolsters from overspray.

Lastly, is the Electric Railway Clubs of Florida still extant? If so, contact info?

Until next month, happy modeling.

Jim Moore

Eastern Division Superintendent

Western Division



Don doesn't have anything new to share this issue.

If you or your club have any news or events to share, please let me know so I can share it with the Western Division members.

Western Events

There are 2 Western Division Workshops currently scheduled:

March 23 in N Ft Myers, hosted by the Scale Rails of Southwest Florida. Details in the flyer further down.

April 20 in Davenport hosted by the Ridge Model Railroad Club. Watch for more details.

Don Wetmore

Western Division Superintendent

Southern Division



Hello,

Once again, the Southern Div. is quiet, although there are some plans forthcoming for workshops, layout tours and such.

I cannot comment on activities of the Palm Beach Model Railroaders, I believe they are still recovering from the fair. It is tough to bounce back after running trains for two weeks straight.

The Florida Citrus group remains at the Plantation Historical Museum and they still have eight months left in their stay. Here is the address again, 511 N. Fig Tree Lane in Plantation. Museum hours, 10:00 AM to 4:00 PM Wednesday through Saturday, only.

The ECHOES are planning an open running weekend for March, but at the time of this it was not solidified. Rick Diaz did say this is working with the maintenance that was planned for their modules. Nothing like running the trains to find the kinks in the modules, hopefully there are no missing modules. In April they will be on display in conjunction with a car show, so you will have the opportunity to view classic cars and RestoMods.

The South Florida Railway Museum in Deerfield Beach is hosting a division workshop on the 16th of March at their regular haunt of St. Paul Lutheran Church in Boca. This workshop is a step into the prototype arena, an experiment in attracting RPM modelers into the fold. Besides, there is nothing wrong with rivet counters, really, nothing, they put their pants on just like the rest of you! They also

are getting ready to elect a new slate of officers for the coming year, well a somewhat new slate. There are plans to hold another layout tour for their members, with a request for non-members to offer theirs also. Their hours open to the public, the 2nd Saturday of each month, for March (03/09/24), from 11 AM to 4 PM.

The Journal Box, edition (Volume 80), will have content, I have received articles from a few folks, so it will not be a wisp of a few pages. But that is only one issue, keep those articles coming!

The Southern Div. is quiet, there isn't much going on down here for the month of February, other than the Florida Citrus group. But first we will start at the top of the Palm Beach contingent of the division.

The Palm Beach Model Railroaders were in the thick of being on display in conjunction with the South Florida Fair, but it has come to an end. I believe with the closing of the fair they will return to the projects that were in process. Or, they will take a much needed rest after the busy schedule of running trains for two weeks straight.

The Florida Citrus group packed up and left from the Southwest Regional Library and moved lock, stock, and barrel to the Plantation Historical Museum for an extended stay. Nine months! The museum is located at 511 N. Fig Tree Lane in Plantation. The museum hours are from 10:00 AM to 4:00 PM and the open days are Wednesday through Saturday, only. Stop by and see them.

The ECHOES are recovering from their annual holiday operation and taking the month of February off. They do have some maintenance planned for their modules in the upcoming months, but no public displays until April.

The South Florida Railway Museum in Deerfield Beach is one step away from being around for another five to ten years. The lease agreement is in its final stages, a relief for the membership. Again, I will post their new hours open to the public, the 2nd Saturday of each month, for February (02/10/24), from 11 AM to 4 PM.

A bit of excitement for the region, or at least the Southern part of it. One of the members of the SFRM got to run train operations with the president of the NMRA last month. Mr. Robinson made a work-related visit to south Florida and had a break in the meetings to run trains with Richard Berger at his home. I understand it was 90 minutes of breaking and making consists, set outs, and pick-ups on Richard's "N" scale layout. Richard had a great time running trains and conversing, I haven't talked to the president yet, I will let you know his observations next month.

As I said last month, the Journal Box, is in need of content. Luckily my request has been witnessed and answered and content has arrived. So, the next edition (Volume 80), which will be published in March will have something to fill the pages. As of this writing, there will be articles in the areas of general knowledge, some history, and step by step instruction. I hope to hear from some of our past contributors and as always, looking for new contributors to share their stories, ideas, and methods of modeling with the rest of us.

Until next month, Model 60!

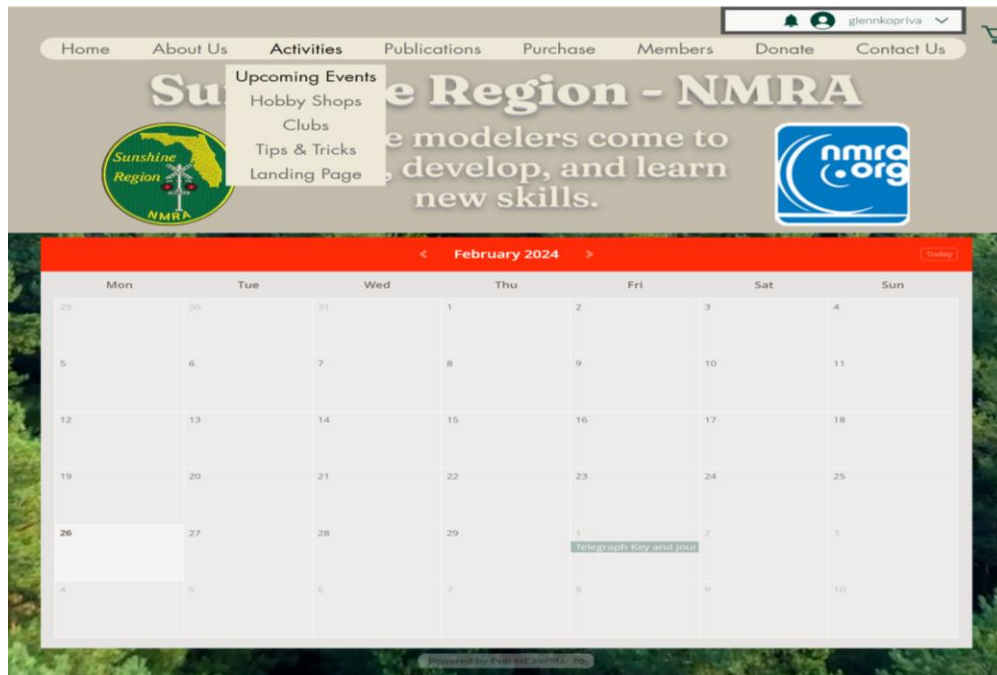
Robert Leonard

Southern Division Superintendent

Website Enhancements

Hello everyone. I'm pleased to say that we have added some much needed areas to our website. I'll go through a brief description of each item and its contents.

The first item we have added is a very nice Event Calendar which, when you click on an event, will display related information to include a description, cost, location etc. We've needed this for a long time. See below.



This calendar will get populated as time goes on but we have the foundation built. To include and Region, Division or Club related event please email NMRA_SunshineRegionMail@yahoo.com with :

Event Title

Description of Event

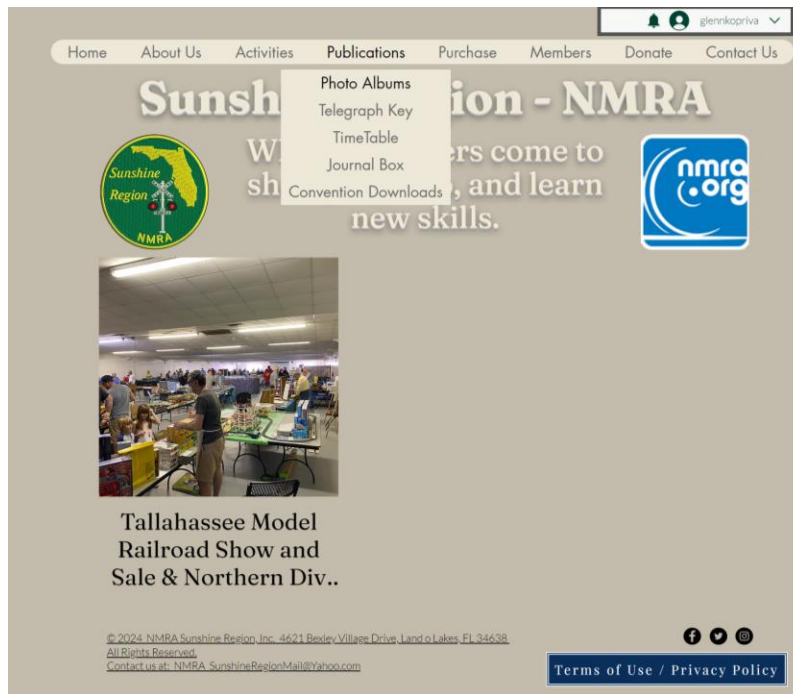
Location

Date and Time

Fees

If there is another website to follow for this event provide this as well.


Now the 2nd item we have added is the long awaited photo gallery! Our photo gallery will be set in photo albums, so each event we have can easily be grouped together and if we have names and or short descriptions of a photo we will be able to add this info under each photo.



Currently, we have one album of photos available but more to come. Simply click on the album photo and a new full screen viewing panel will display (please give your system a few extra seconds to load the content). You'll also notice a new tab has been opened – simply X out of the photo window and you'll be back on our website.

Tallahassee Model Railroad Show and Sale & Northern Div Meet

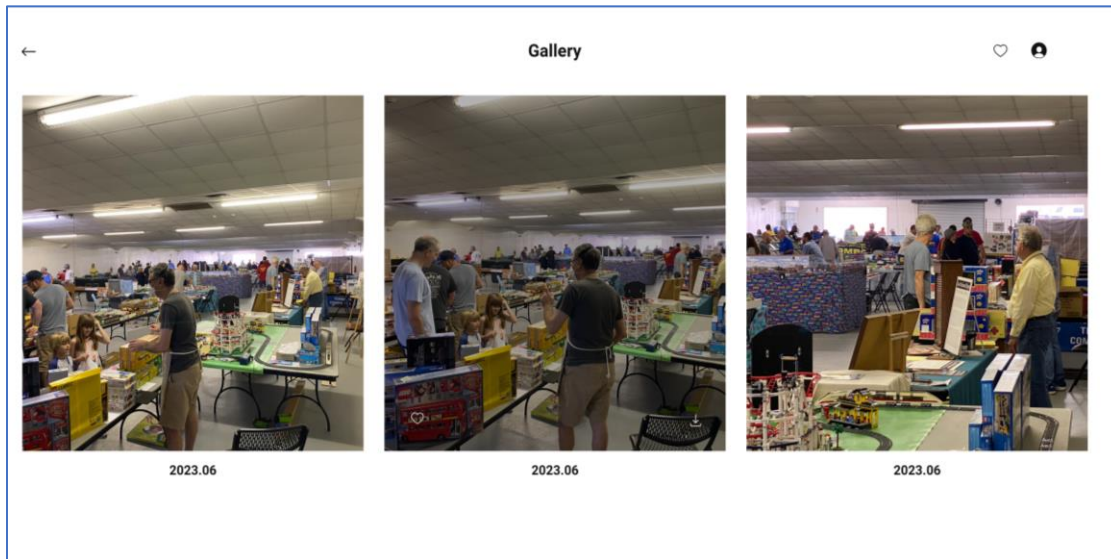
June 2023



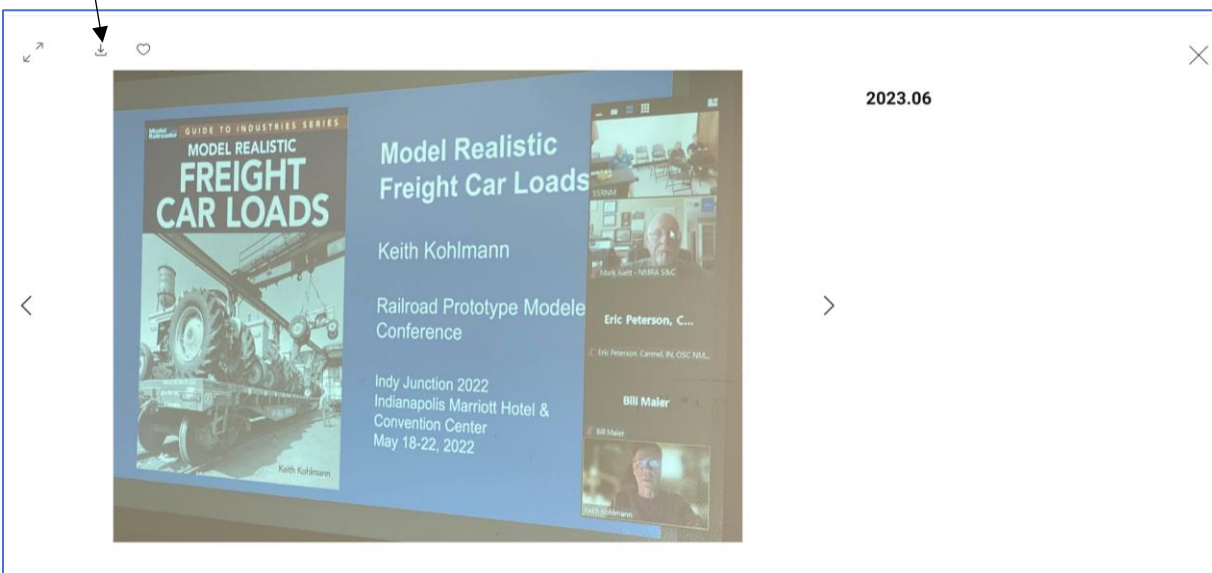
Sunshine Region, Inc View Photos →

To see the photos, click on the words “View Photos” in the bottom right hand corner of your screen.

You will then be immersed in a 3 column scrollable picture view that you can control using your mouse, page up or page down buttons on your keyboard.



If you see a picture you like and would want to download it, simply click the picture and you will be brought here:



Click on the download icon above (as pointed to by the arrow above) and you will be able to save the photo.

Lastly, in an effort to be transparent and provide information that does not belong in a public website we have created a Members Only area. This area will house our Region Bylaws, Region Policies, Award progression/Status to start. There will also be an Admin area that will have restricted access.

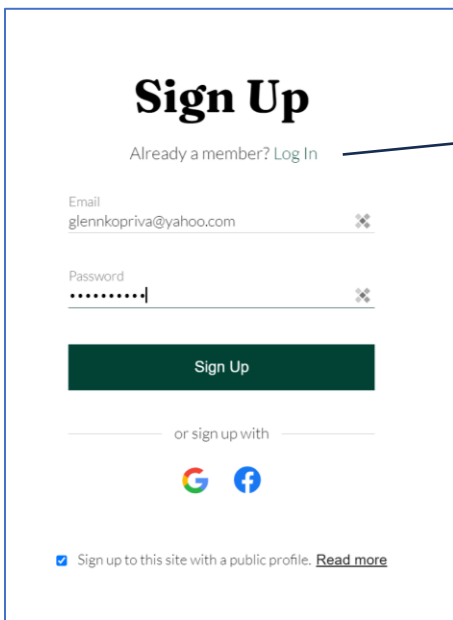
We have deleted all previous member records from the website so if you had joined previously you will need to re-do the process. Since this is a secure area, only current active members will have access. There is an email verification that happens when you request access and then there will be an approval process to validate membership. This is a manual task so do not expect immediate

access. That being said, there is nothing in the member area yet. The pages have been built and the documents previously mentioned are being modified. Once they are complete they will be available for all members to see. The goal here is to get everyone to become a member and when the data is pushed to the site everyone will be ready to go.

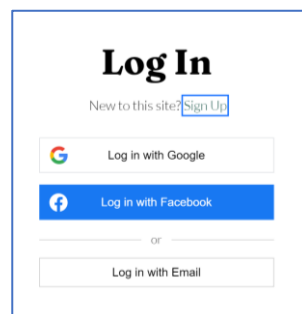
You will see the menu on our site has changed slightly:



The login process is very straightforward and I'm sure most everyone has gone through this or a similar process. When you click on the words Log In (as pictured above) you will be taken to a screen called Sign Up

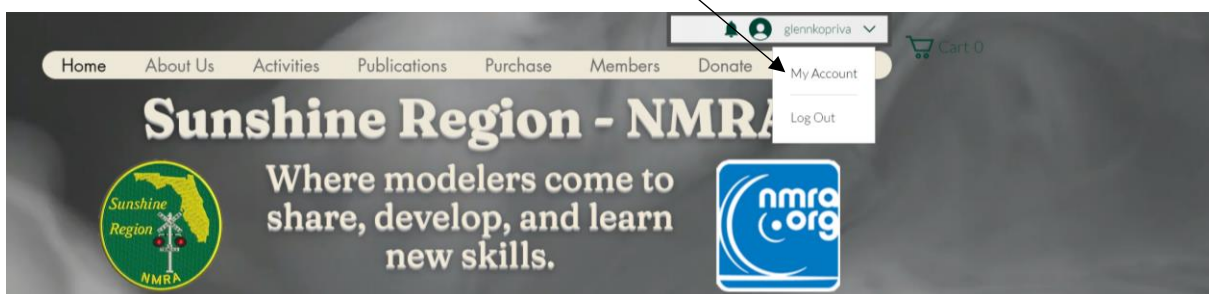


Once you are an approved member be sure to click "Log In" and you will be brought to the below window to log in



Once you click on Sign Up, you will receive a confirmation screen requesting the code sent to your email address. Once you enter the code and click confirm you will get the success message.

Finally, once your request has been approved you will receive a final email letting you know you are set. The last item I ask everyone to do is once you are finally approved for access you log in and select the drop down box and you will see My Account



Click on my account and you can update your name, email, phone number and NMRA #. Please do this as it makes your info readily available.

So that's it. If you have any questions please email me. We are making progress to be the best region under the sun! Thanks everyone.

Glenn Kopriva

Webmaster

SUNSHINE REGION NMRA

Southern Division Workshop & Mini Railroad Prototype Modeler Meet



Date: March 16, 2024
Location:

St. Paul Lutheran Church
Activities Center
701 W. Palmetto Park Rd.
Boca Raton, FL



Time: 9:00 AM to 5:00 PM

REGISTRATION: \$20.00

Meet & Greet with coffee and donuts	9:00 – 9:30 AM
Score n Snap, Scratch Building with Styrene	9:30 – 10:30 AM
Weathering with Gouache Paint	10:45 – 12:00 PM
Lunch <i>a really good wedge</i>	12:15 – 1:15 PM
Identifying Penn Central Caboose(s)	1:30 – 2:30 PM
The EMC / EMD “F” Unit	2:45 – 4:00 PM
Raffle Drawing & Announcements	4:30 - ?

Presented by South Florida Railway Museum

For further information please contact:

Bob Leonard 954 801 1961, leonardstrait@gmail.com

Bring your modeled building, bridge, rolling stock, or motive power for display and share your model railroading talents.

If you have a model, you want judged for AP Certification, let me know in advance.

NON-MEMBERS ARE WELCOME

To preregister fill out the form below and mail it along with your check made;

Payable to: NMRA Sunshine Region Southern Division (checks only):

**Send to;
South Florida Railway Museum
1300 W. Hillsboro Blvd.
Deerfield Beach, FL 33442
Attn. Bob Leonard, Southern Division Superintendent**

2024 SOUTHERN DIVISION WORKSHOP REGISTRATION

Admission: \$20.00

Name	
NMRA Number	
Email	
Phone #	
Address	

Signature _____

Date _____



PENSACOLA'S PREMIER HOBBY TRAIN STORE & REPAIR CENTER

We are a Lionel Authorized Value-Added Dealer!

Decoders Installed & Programming Services for Lionel Legacy, ESU LokSound, SoundTraxx, MTH DCS, Digitrax & TCS

Some of the lines we carry:

Kato HO & N, Peco HO & N, Micro-Trains, Kadee, Lionel, Woodland Scenics, Digitrax Decoders & Acc., SoundTraxx Decoders, TCS Decoders, ESU Decoders, Rokuhan Z

Remember do not to wait until December to check your Christmas Trains for repairs or cleaning!

Tucker's Train Supply

Pensacola, FL

www.TuckersTrainSupply.com

(850) 723-5390



NMRA Sunshine Region Western Division Spring Workshop

Hosted by

Scale Rails of Southwest Florida

<http://www.scalerails.org>

Location Scale Rails of SW Florida Depot

1262 Piney Road

N Fort Myers, FL 33903

Date: Saturday March 23, 2024

Time: 9:30 am till 3pm

Admission \$20.00 Includes:

Meet and greet with coffee/doughnuts.

Lunch

4 Clinics:

John Seaman: Weathering for Rolling Stock/Locos

Bob McLaughlin: Decaling Tips/Techniques

Donovan Lewis: Modeling the Steel Industry

Keith Kramer: Choosing Realistic Vehicles for Your Layout

Open house/operating session on club layout

Contact: Mark Wilson Mwilsongn1@aol.com 260-452-7727

<https://www.nmrasunshineregion.org/>



E.C.H.O.E.S is a modular model railroad club located in Miami-Dade, Florida, dedicated to building and displaying our HO scale model railroad layout. Our purpose is to enjoy and promote the hobby of model railroading and preserve the history of railroading in South Florida. The club was started in the summer of 1985, with the goal of presenting a HO scale modular model railroad layout for display at “The Harvest Festival”. Throughout the years, the layout has been displayed at regional conventions, four NMRA National Train Shows (Atlanta twice, Ft. Lauderdale, FL and Orlando), and other events in Miami Dade and Broward counties. We do running/operating sessions several times a year and welcome guests to join us. Membership is open and we welcome anyone who shares an interest and passion for Model railroading.

For more information, please contact:

Rick Diaz	rickdiaz@att.net	305 496 9266
Tracey Sanders	tassailor@mac.com	786 514 5667
Herb Ford	ehf640@gmail.com	786 375 1424



www.RobsHobbyWorld.com

Robshobbyworld@msn.com

Hours: Monday-Friday
10-530, Saturday 9-4

Rob's Hobby World

R/C Planes, Cars and Boats ~ Trains ~ Plastic Models ~ Tools,
Paints and Accessoires

8585 SW Hwy 200
unit 14
Ocala, FL 34481

352-854-2799



..America's Railroad Embroiderer

Serving the Railroad Industry and Hobbyists Since 1985

We Have The Largest Selection Of Embroidered Products Anywhere!

APRONS

Embroidered Aprons

BILLFOLDS

Embroidered Men's Billfolds

CAPS-HATS

Embroidered Caps
Dining Car Chef's Hats
Embroidered Engineer's Caps

SHIRTS

Embroidered Denim Shirts
Embroidered Firefighter Work Shirts
Embroidered Oxford Shirts
Embroidered Polo Style Shirts
Embroidered Sweatshirts
Embroidered T-Shirts
American Flag Embroidered Shirts

JACKETS

Embroidered Jackets

PANTS - SHORTS

Embroidered Men's Walking Shorts

TOTES - BAGS - BACKPACKS

Embroidered Cloth Attaché Cases
Embroidered Tote Bags
Embroidered Shaving / Camera Bags

TOWELS - SEAT COVERS

Embroidered Toilet Seat Covers
Embroidered Heavy Cotton Terry Towels
Embroidered Heavy Cotton Terry Golf Towels

UNDERGARMENTS

Embroidered Underwear

TIES

Railroad Embroidered Ties

Nobody Beats Our Quality!



Order NOW! www.jelsma.com • 904.716.0436

The Telegraph Key is an Official Publication of the NMRA Sunshine Region, Inc.

All material in this publication, except where noted, is Copyright © 2023 NMRA Sunshine Region, Inc. and may NOT be reproduced without the express written permission from the publisher. Trademarks, servicemarks, etc., where used, are the property of their owners. All Rights reserved.

You are receiving this email because you opted in when becoming an NMRA member.

Our mailing address is:

NMRA Sunshine Region, Inc.

4621 Bexley Village Dr

Land O Lakes, FL 34638

