

...America's Railroad Embroiderer

Serving the Railroad Industry and Hobbyists Since 1985

**We Have The Largest
Selection Of Embroidered
Products Anywhere!**

APRONS

Embroidered Aprons

BILFOLDS

Embroidered Men's Billfolds

CAPS-HATS

Embroidered Caps

Dining Car Chef's Hats

Embroidered Engineer's Caps

SHIRTS

Embroidered Denim Shirts

Embroidered Firefighter Work Shirts

Embroidered Oxford Shirts

Embroidered Polo Style Shirts

Embroidered Sweatshirts

Embroidered T-Shirts

American Flag Embroidered Shirts

JACKETS

Embroidered Jackets

PANTS - SHORTS

Embroidered Men's Walking Shorts

TOTES - BAGS - BACKPACKS

Embroidered Cloth Attaché Cases

Embroidered Tote Bags

Embroidered Shaving / Camera Bags

TOWELS - SEAT COVERS

Embroidered Toilet Seat Covers

Embroidered Heavy Cotton Terry Towels

Embroidered Heavy Cotton Terry Golf Towels

UNDERGARMENTS

Embroidered Underwear

TIES

Railroad Embroidered Ties

**Nobody Beats
Our Quality!**



Order NOW! www.jelsma.com • 904.716.0436

OFFICIAL TIMETABLE

No. 5

HIGH SPEED RAIL

SUNSHINE REGION - 2023 CONVENTION

OCTOBER 12 – 14 2023

John Trinkle Center Plant City Campus of HCC

1206 N Park Road

Plant City, Florida



Sponsored in part by

Rob's Hobby World

8585 SW State Road 200, Ocala, FL 34481

352-854-2799

robshobbyworld@msn.com

WELCOME:

Greetings,

Welcome to the 2023 Sunshine Region Convention in Plant City FL. This year's Convention is going to be great, we have the multiple clinics, a hands-on clinic, the train show, the Caboose Challenge and the Banquet. Just about something for everyone.

Glenn and his team have worked hard to put together the best possible convention. Friday evening (7PM – 9:30PM) we are having an ice cream social on the patio at the hotel. We will have a special guest, Gordy Robinson NMRA President attending the convention.

There will be a SSR Board of Directors meeting Sunday, October 15th at 9AM in the hotel 1st floor conference room. All members are welcome to attend.

I know in these times with higher inflation, you could have chosen another venue to attend. We thank you for choosing our SSR Convention.

Gene Jameson
Sunshine Region President

And a message from our NMRA President:

I'm very pleased to be able to welcome you in person this year to the Sunshine Region Convention. I hope you will take the time over the next few days to renew old friendships and make new ones. Remember many of us join the NMRA for the trains and stay for the people. I'll be hoping to meet as many of you as possible and look forward to seeing you at my clinic and talking to you all at the banquet.

Gordy Robinson, MMR
President

National Model Railroad Association



PENSACOLA'S PREMIER HOBBY TRAIN STORE & REPAIR CENTER

We are a Lionel Authorized Value-Added Dealer!

Decoders Installed & Programming Services for Lionel Legacy, ESU LokSound, SoundTraxx, MTH DCS, Digitrax & TCS

Some of the lines we carry:

Kato HO & N, Peco HO & N, Micro-Trains, Kadee, Lionel, Woodland Scenics, Digitrax Decoders & Acc., SoundTraxx Decoders, TCS Decoders, ESU Decoders, Rokuhan Z

Remember do not to wait until December to check your Christmas Trains for repairs or cleaning!

Tucker's Train Supply

Pensacola, FL

www.TuckersTrainSupply.com

(850) 723-5390

The NMRA Sunshine Region thanks the following businesses for supporting the NMRA Sunshine Region by the generous donation of their products to our 2023 Regional Convention. Without the help of businesses like these the Region could not sustain itself.

Again thank you,

- ◆ Showcase Miniatures
- ◆ Soundtraxx
- ◆ RIXX Products
- ◆ RAM (Radio Controlled Models, Inc)
- ◆ Intermountain Railway Company
- ◆ Blackstone Industries, LLC
- ◆ Great Decals!
- ◆ Larc Products
- ◆ Ron's Books
- ◆ Wm. K. Walthers, Inc.
- ◆ Microscale Industries
- ◆ Build Your Own Model Railroad.com
- ◆ New York Life Insurance
- ◆ Trainz
- ◆ Cowcatcher Magazine
- ◆ Tru-Color Paints
- ◆ Kadee Quality Products, Co.
- ◆ Cowcatcher Magazine
- ◆ [Deepwoods Software](#)

Convention Schedule at a Glance

Thursday

At Brightline Maintenance Facility

1:00pm Tour of facility

At the Holiday Inn Express

3:30pm Registration Open

4:00-9:00pm Tom Wilson's Op Session

5:00pm Registration Closed for the Night

5:30 – 7:00pm Dinner on your own

7:15pm Clinics Start

Friday

At John Trinkle Center, HCC

8:00am Registration Opens

8:30am Clinics Start

9:00am Celebration of Model's Registration & Model & Caboose Challenge Check-in

8:30am Clinics Start

12:00pm Closed for Lunch

1:00pm Celebration of Model's Open

1:00 pm Clinics Start

7:00 pm **Meet & Greet Ice Cream Social Located at the Hotel Pool Patio**

Saturday

At John Trinkle Center, HCC

8:00am Registration Opens

8:30am Clinics Start

10:00am Celebration of Models/Caboose Challenge


Registration Closed

10:30am Celebration of Models Judging Starts—no viewing

12:00pm Everything Closed for Lunch except Train Show

FIRST COAST MODEL RAILROAD SOCIETY

HO & Dn30 SCALES DIGITRAX DCC



1414 Millcoe Road, Unit 2105
Jacksonville, FL 32225
Richard Paul
Home -(904) 223-5133
Cell - (904) 616-8110
fcMrs46@gmail.com

Saturday At John Trinkle Center Plant City Campus HCC

- 1:00pm Clinics Start
- 4:30pm Clinics Closing
- 6:00pm Banquet
- Announcements
- Dinner
- Keynote Speakers
- Model Contest Awards
- AP Merit Certificate Awards
- Caboose Challenge
- Raffle
- Special Drawing for all Banquet Attendees

HOPE YOU HAD A GREAT TIME AT THE CONVENTION

HAVE A SAFE TRIP HOME, THANKS FOR COMING



Fun, Friends, Trains

4042 Deltona Blvd.
Spring Hill, FL 34606

352-684-2484

Email: dana@danarailroadsupply.com
Web Site: danarailroadsupply.com

**TRAIN SETS • KITS • PARTS • DECALS • DIGITRAX
PAINTS • BOOKS • REPAIRS • LIONEL • SHIP & AIRPLANE MODELS**

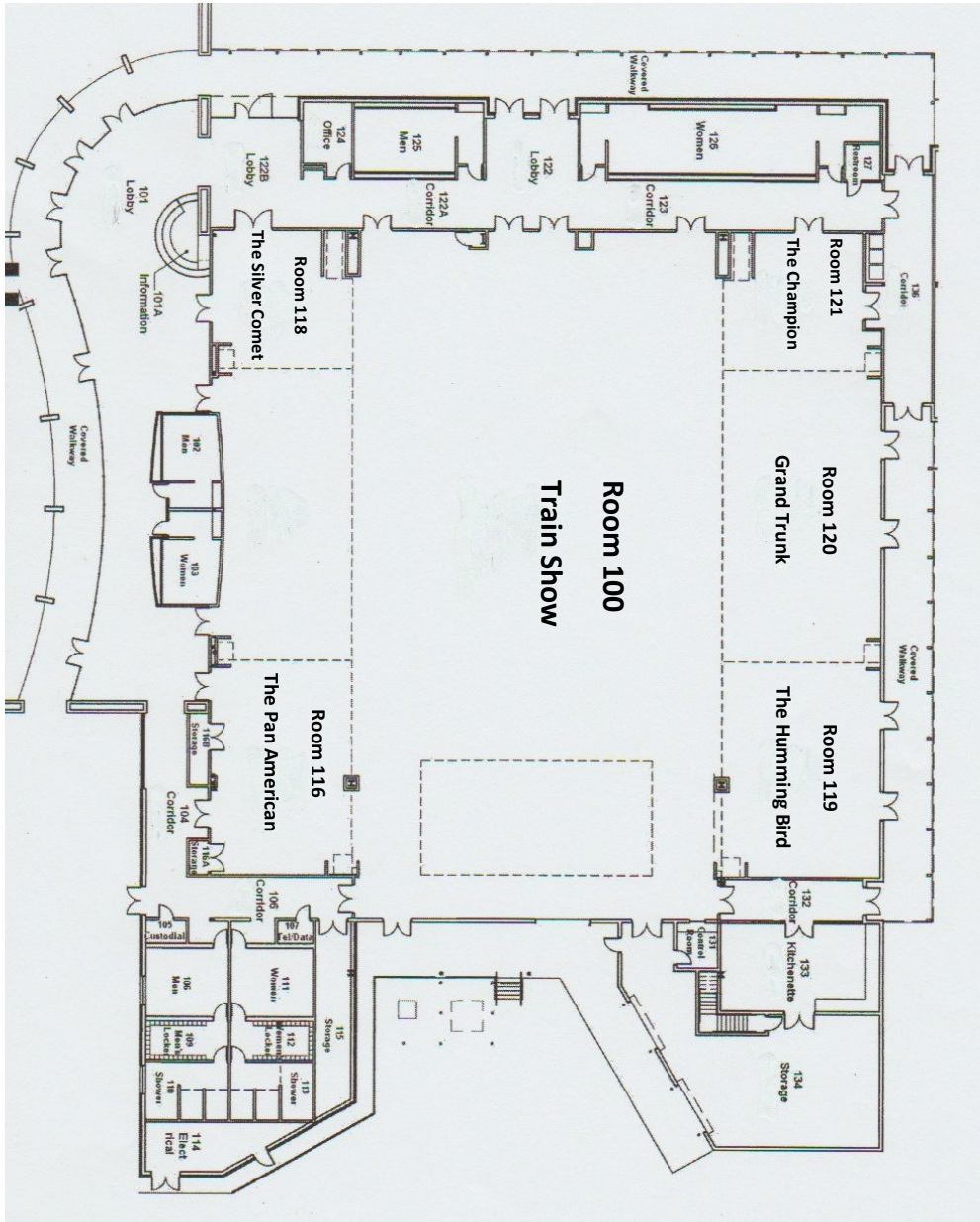


E.C.H.O.E.S is a modular model railroad club located in Miami-Dade, Florida, dedicated to building and displaying our HO scale model railroad layout. Our purpose is to enjoy and promote the hobby of model railroading and preserve the history of railroading in South Florida. The club was started in the summer of 1985, with the goal of presenting a HO scale modular model railroad layout for display at "The Harvest Festival". Throughout the years, the layout has been displayed at regional conventions, four NMRA National Train Shows (Atlanta twice, Ft. Lauderdale, FL and Orlando), and other events in Miami Dade and Broward counties. We do running/operating sessions several times a year and welcome guests to join us. Membership is open and we welcome anyone who shares an interest and passion for Model railroading.

For more information, please contact:

Rick Diaz	rickdiaz@att.net	305 496 9266
Tracey Sanders	tassailor@mac.com	786 514 5667
Herb Ford	ehf640@gmail.com	786 375 1424





A Celebration of Models

Room 117 A

If you have brought a model to be entered in the Celebration of Models we hope the appropriate paper work has been filled out ahead of time to expedite the entry process. If not see the model contest personnel in the Celebration Room.

Schedule:

Friday At John Trinkle Center

- 9:00 am Check in Models
- 9:30-11:45am Open for Viewing
- 11:45/ 1:00 pm Closed for Lunch
- 1:00/ 4:30 pm Open for Viewing

Saturday At John Trinkle Center

- 9:00-10:00 am Open for Viewing-Model Registration closes at 10am
- 10:30am Judging Starts—Room Closed to Viewing
- 11:30/ 1:00 pm Closed for Lunch

CLINIC SCHEDULE

THURSDAY 10/12/2023

HOLIDAY INN EXPRESS & SUITES

7:15 PM to 9:30 pm Potatoes

Rich Mahaney

This is an audience participation clinic. For more info go to page 13.

	PAN AMERICAN TRACK 1	SILVER COMET TRACK 2	CHAMPION TRACK 3
TIME	ROOM #116	ROOM #118	ROOM #121
8:30 AM To 9:30 AM	"Quick Industries" for Your Model Railroad	Celebration of Models - Judging 101	Introduction to Operations on Your Model Railroad
Clinician	Rich Mahaney	Benita Jameson	Don Wetmore
9:45 AM To 10:45AM	The Smells of Model Railroading!	Celebration of Models - Judging 102	Watertown Northern, The Moonshine Line
Clinician	Rich Mahaney	Benita Jameson	Rich Paul
11:00 AM To 12 Noon	Creating Other Interesting Industries on Your Model Railroad Layout	Installing DCC & Sound Decoders Diesels	Add Lighting to Modern Day Locomotives
Clinician	Rich Mahaney	Greg Garbacz	Jim Wiese
NOON to 1:00 PM LUNCH BREAK			
1:00 PM To 2:00 PM	Intermodel 101 for Model Railroaders	Making Signs for Buildings	Modeling Florida Scenery
Clinician	Rich Mahaney	Robert Leonard	Bob Miller
2:15 PM To 3:15 PM	Making "Stuff" for Model Railroaders	Modeling a Prototype Passenger Consist	Documenting Your Layout
Clinician	Rich Mahaney	Don Wetmore	Gene Jameson
3:30 PM To 4:30 PM	Meet the NMRA President - Check the White Board for Gordy's Clinic Room	Closed	Closed
Clinician	Gordy Robinson (MMR)		
7:30 PM To 9:30 PM	MEET & GREET ICE CREAM SOCIAL LOCATED AT THE HOTEL POOL PATIO		

Making "Stuff" for Model Railroaders - How is "stuff" made? A look at how "stuff" is made is made so that the model railroader can understand the correct use of railroad cars for delivery of solids, liquids and gases by railroad cars to industries. Several products and industries will be case studied and a process to do this will be discussed for the model railroader to use. The primary goals are to get it right and do it right for better rail car movement and use and be prototypically correct.

Five Busy Railroad Traffic Locations for Your Layout (Interchanges, Freight Houses, Team Tracks, Bulk Transfer Facilities and Rail Car Repair Facilities - This clinic looks at five busy locations that can be built on your layout to increase rail car operations, can use any kind or type of car on your layout, create rail car traffic and operations, can be used to support industries that don't have a railroad spur and can fit into a small space on your layout.

"Big Pipes" – Adding pipe details to various types of industries. - This clinic looks at very large pipes on industries that are used to move solids, liquids, and gases. Besides serving as an important part of the industrial process in manufacturing, they also look cool. Get some modelling ideas for industries on your layout.

Understanding how stuff is made, how the railroad supports that with car placement, just in time deliveries, modeling industries and operations - This clinic deals with industry design and operations; how products are made and assembled involving solids, liquids and gases; railroad operation to support industries with parts and shipping; "just in time" operations, car placement at industries and railroad operations and traffic. Model railroaders need to do research into the industries and products they want to model, it is not just enough to just place some buildings or a siding on your layout.

“Quick Industries” for Your Model Railroad - This 60 minute presentation is designed give model railroaders industry ideas for their model railroad that can be assembled in several evenings (or days) of work. These industries can quickly increase railroad traffic and new customers. Examples of real facilities and model railroad examples are used to make the points.

Creating Other Interesting Industries on Your Model Railroad Layout

In this 60 minute presentation we look at other industries and buildings made from structural members and backdrops involved with layout construction.

Railroad Cars That Transport Hazardous Materials - This 60 minute presentation provides the model railroader with a basic understanding of what kinds of railroad cars transport what kinds of solids, liquids and gas types of hazardous materials. Discussion and photos illustrate the many types of railroads cars that are used to transport hazardous materials safely across North America every day, along

1950’s Refrigerator Car Layout Operations on Model Railroad Layouts

After looking at and photographing refrigerator cars, icing platforms, cold storage and other buildings and operations on many layouts, this clinic presents some of the best ideas and modeling I have seen that capture the feel and operations involved with refrigerator car operations in the 1950’s.

“OMG” – Prototypical Accessories To Buildings and Communities For Model Railroads!

- Take a look at the accessories and details that you are missing on your buildings and in your communities that stand out when you look around or travel around. The only thing you can say when you see these images is “OMG”! Most of these additional features can probably come from the scrape boxes or parts and pieces underneath your layout or on your work bench. You may not have much to buy when you through “spare stuff”. (60 minutes)

The Smells of Model Railroad! - A 60 minute look at ways to add another aspect of scenery to your model railroad – “smells”. Did you know there is a candle that smells like fresh cut wood?

SATURDAY CLINIC SCHEDULE

	PAN AMERICAN TRACK 1	SILVER COMET TRACK 2	CHAMPION TRACK 3
TIME	ROOM #116	ROOM #118	ROOM #121
CELEBRATION OF MODELS LOCATED IN ROOM #117			
8:30 AM To 9:30 AM	Interesting Flat Car Loads	How to Make Trees in a Big Pretzel Container - Hands On - No Charge	Arduino Timers and State Machines
Clinician	Rich Mahaney	Ken Hoot	Ray Hazen
9:45 AM To 10:45AM	Five Busy Railroad Traffic Locations for Your Layout (Interchanges, Freight Houses, Team Tracks, etc)	T-Trak, a Day in the Life of a T-Trak Module	Building a Battery Powered Locomotive (HO, On30, & O Scales)
Clinician	Rich Mahaney	Andy Zimmerman	Ray Hazen
11:00 AM To 12 Noon	Understanding How Stuff is Made, How the Railroad Supports that with Car Placement, Just in Time Deliveries, Modeling Industries and Operations	The Chicago Milk Shed - Shipping Milk to Chicago	Building Details through the Eyes of a Building Inspector
Clinician	Rich Mahaney	David Leider (MMR)	Tom Wilson
NOON to 1:00 PM LUNCH BREAK			
TRAIN SHOW - Hours 9:00 AM to 3:00 PM			
1:00 PM To 2:00 PM	"OMG"-Prototypical Accessories to Buildings and Communities for Model Railroads	JMRI Creating a CTC Panel	Getting Your AP Golden Spike Without Owning a Layout
Clinician	Rich Mahaney	John Crellin	Bruce Lauerman
2:15 PM To 3:15 PM	"Big Pipes" - Adding Pipe Details to Various Types of Industries	3D Printing	Modeling Considerations for 1950's Modeler
Clinician	Rich Mahaney	Glenn Kopriva	Gilbert Thomas, Jr.
3:30 PM To 4:30 PM	1950's Refrigerator Car Layout Operations on Model Railroad Layout	The Chicago Stock Yards	Modeling Considerations for the 2000's Modeler
Clinician	Rich Mahaney	David Leider (MMR)	Gilbert Thomas, Jr.
6:00 PM DINNER BANQUET			

Clinics

Andy Zimmerman

T-Trak, a Day in the Life of a T-Trak Module – How to build a T-Trak Module from start to finish.

Benita Jameson

Celebration of Models – Judging 101- Have you ever considered entering a model in a contest? Do you have a model that you want evaluated for the AP program? Have you ever wondered what goes on behind those closed doors? Do you want to become a better modeler? If you answered yes to any of these questions, then this is the clinic for you! You will learn: *Judging criteria in each of the 5 factors *Point allotments for each factor *How models are evaluated *How is the judging done *What are the categories *AP judging guidelines. **NOTE:** This clinic is mandatory for all SSR judges! Attendance in this clinic is a prerequisite for Judging 102

Celebration of Models – Judging 102 - This is an interactive advanced judging class with emphasis on calibration, so that an experienced judge can consistently and fairly judge any type of model. **NOTE:** This clinic is mandatory for team leaders!

Bob Leonard

Hands-On (Cost \$10, need to sign up on website) Making Signs for Buildings (Clinic is 2 Hours) - Signs of Tissue - New signs, Old signs, Ghost signs, all interesting additions for your structures. The clinic covers the use of using tissue paper, adding the printed paper sign to your structure and weathering to fit the timeframe. We will go through the print process to capture the types of signs, wall painted, posters, enamel logos that create a story and scene. What to bring; a blank kit wall, a structure, a copy of a sign sized for the wall, and your presence.

***** Rich Mahaney – will be presenting the following 13 Clinics *****

Thursday Night Hotel Clinic – 7PM - Potatoes - This new presentation looks at the potato from growing to the final product in an “audience participation” clinic format. The students will participate in selecting railroad car needs and traffic, transporting chemicals, growing products, railroad car traffic, the making of consumer products from potatoes, potato industries, and more. Lots of fun, answer questions, fill out flip charts on the wall and discuss the answers with the group for comparison answers and different answers.

Intermodal 101 For Model Railroaders - This 60 minute presentation looks at intermodal operations, intermodal box and tank containers, truck trailers, intermodal facilities, intermodal and truck trailer equipment and transferring the prototype to the model railroad.

Interesting Flat Car Loads - This 45 to 60 minute presentation looks at a variety of “stuff” that is transported on flat cars by railroads. It answers the question, “do they really transport that “stuff” on flat cars for real”? It will give the modeler some ideas for their own flat car loads to build.

www.RobsHobbyWorld.com

Robshobbyworld@msn.com

Hours: Monday-Friday
10-530, Saturday 9-4

Rob's Hobby World

R/C Planes, Cars and Boats ~ Trains ~ Plastic Models ~ Tools,
Paints and Accessores

8585 SW Hwy 200
unit 14
Ocala, FL 34481

352-854-2799



- Ray Hazen** **Arduino Timers and State Machines** - Timing methods and their use in program flow, multiple simultaneous timers, state machines for program sequences. (Basic Arduino experience will be helpful.)
- Ray Hazen** **Building a Battery Powered Locomotive (HO, On30, & O Scales)** - Steps to design and build a battery-powered locomotive. Choose parts, build, suggestions, Examples in HO, On30 and O scales.
- Rich Mahaney** **13 Clinics** - SEE Page 13
- Rich Paul** **Watertown Northern, The Moonshine Line** - Clinic Description: Presentation about The Watertown Northern Railroad, a logging railroad of the East Coast Lumber Co in Watertown, Florida just east of Lake City Florida.
- Tom Wilson** **Building Details through the Eyes of a Building Inspector** – Tom will show you examples of building details that you may miss through the eyes of a Building Inspector
- Tom Wilson** **Layout Renewal/Rehabbing Your Layout from Old to New** – Taking a fully operational section of the layout stripping it down to bare plywood and rebuilding it back.

Bob Miller

Modeling Florida Scenery – How to clinic dealing with the scenery of the Southeast including the coastal areas. Sabal (Cabbage Palms), Long Leaf Palms, Cypress Trees, Palmettos, Marsh Grass, Mangroves, and Citrus Trees, covered in detail. Robert models and HO but his techniques are workable on all scales. Join him for a fun trip through FL. This is the one to see if you are modeling FL scenery. Bob’s will supply a very detailed handout, on FL Scenery.

Bruce Lauerman

Getting Your AP Golden Spike – Bruce will show you how to get your Golden Spike without owning a layout. He will show you how to take a module from start to finish to get your Golden Spike.

David Leider (MMR)

Chicago Stock Yards - Beginning of Stockyards in Chicago and how they came to be and the history from start to finish.

David Leider (MMR)

The Chicago Milk Shed- Shipping milk to Chicago – Where Chicago got it’s milk and how the railroads were so important to deliver their milk.

Don Wetmore

Introduction to Operations on Your Model Railroad - Getting started in model railroad operations, including different options for car forwarding, train scheduling, and train dispatching. Also learn helpful tools to assist your operating crews.

Don Wetmore

Modeling a Prototype Passenger Consist - Accurately modeling a prototype passenger train using examples of shorter trains run by the Burlington and Chicago Great Western.

**Don Wetmore**

Researching a Prototype Railroad – This clinic will be a fill-in in case a clinician is unavailable. Sources of information about prototype railroads, what you can learn from each source, and how to apply it to your model railroad.

Greg Garbacz

Installing DCC & Sound Decoders Diesels – Greg will show you how to replace motors, trim weights and add speakers using regular garage tools.

Gene Jameson

Documenting Your Layout – Clinic will be useful for ALL modelers regardless of scale. Gene will cover all the items that need to be documented and other items that concern your layout in an emergency. *Do you know how much your railroad is worth if you had to replace it, *Do you remember how you wired the matrix for your yard, *Or the location of all your insulated rail joiners? If you answered NO to any of these questions, this is the clinic for you.

Gilbert Thomas, Jr.

Modeling Considerations for the 1950's Modeler - American railroads are quickly retiring their steam locomotives and purchasing new diesel locomotives. This clinic will review the major changes in railroading and help to give the 1950's modeler a clearer focus for their modeling efforts.

Modeling Considerations for the 2000's Modeler - American railroads have completed their mergers (for the time being). Railroads are more focused on developing efficiencies within their companies. Technology is quickly replacing employees. A new concept in railroading "Precision Railroading" is taking hold. What does all this mean for the 2000's Modeler? This clinic will review major changes in the modern railroad business and help give the modeler a clearer focus to help them in the modeling efforts.

Glenn Kopriva

3D Printing – Introduction to 3D Printing, types of printing, where to find items to print, visual display of printers, and general printing tips and instructions.

Gordy Robinson (MMR) Meet the NMRA President – What's been happening at National. What has happened, what is on the way and how the NMRA is building for the future.

Jim Wiese

Add Lighting to Modern Day Locomotives – Jim will show you how to add Ditch lights, Cab lights, and Step lights, using LEDs.

John Crellin

JMRI Creating a CTC Panel – John will show you how to use JMRI Software to create a CTC Panel.