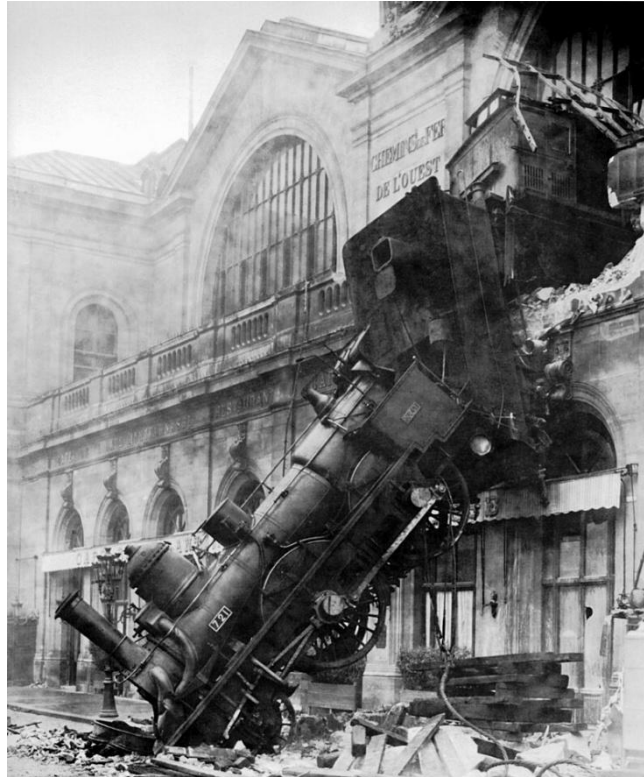


The Telegraph Key

An NMRA Sunshine Region Monthly Publication

April 2025



Happy Apryl!

Sunshine Region - NMRA

 Where modelers come to share, develop, and learn new skills. 

Welcome to the best region under the sun!

[2023 Sunshine Region Convention](#)

[Convention Registration](#)

WWW.NMRA SunshineRegion.org



Contents

Editor's Message	3
President's Message	4
Treasurer's Message.....	6
Achievement Program	8
Northern Division	9
Eastern Division	10
Western Division	10
Southern Division	12
Ski's Tidbits.....	14

Sunshine Region Officials

- President, Andy Zimmerman:
ssrpmez@nmra.org
- Vice President, Mark Lewalski:
vwtrainsailor@gmail.com
- Secretary, Eric Menger:
emenger77@gmail.com
- Treasurer, Glenn Kopriva:
glennkopriva@yahoo.com
- At Large Director, Robert Leonard:
leonardstrait@gmail.com
- At Large Director, Ken Hoot:
hootk@bellsouth.com
- At Large Director, Paul Beckstrom:
paulbeckstrom1948@gmail.com
- At Large Director, Jeff "Ski" Guzowski:
jguzowski@bellsouth.net
- Northern Div. Super, Robert Feuerstein:
photobob321@gmail.com
- Eastern Div. Super
Unfilled
- Southern Div. Super, Richard Berger:
rwberger@comcast.net
- Western Div. Super, Don Wetmore:
stjoeterminal@mail.com
- Achievement Program, Ken Hoot:
hootk@bellsouth.net
- Model Contest, Carl Smeigh, MMR:
- Journal Box Editor, Robert Leonard:
leonardstrait@gmail.com
- Telegraph Key Editor, Mark Lewalski:
vwtrainsailor@gmail.com

Editor's Message



Welcome to April!

So, I got absolutely nothing accomplished on my layout or with my modeling in general. I did go sailing and work on our club Commodore's boat though. I got a sunburn during the sailboat race... ouch! If you couldn't tell already, I'm a dreamer more than a doer.

I did, however, attend an op session on Greg and Gail Komar's West Virginia Northern. I was able to get a switching job for the afternoon portion of the session. It went very well. Those engines just run so great – Greg really has them dialed in! And that scenery... wowza! I just love it.

During the lunch that is given to the operators each session, I found that I really enjoyed the Neapolitan Casserole that Gail had prepared. Since it was served during a model railroad event, I thought that it would be great to share the recipe with all of you. Gail graciously agreed. Here it is:

Neapolitan Casserole served at West Virginia Northern operating sessions.

1 ½ lb ground beef
 1 cup chopped onion
 ½ cup chopped sweet peppers (seeds removed)
 ¾ cup sliced celery
 2 cloves garlic, crushed
 2 teas dried basil leaves
 1 ½ teas fennel seed
 1 tablespoon sugar
 1 tablespoon salt
 1 can (large size 2lb, 3 oz) tomatoes, undrained
 ½ package (1lb size) small shell macaroni (I just use whatever amount)
 1 ½ cup grated sharp Cheddar cheese
 1 lb fresh spinach (I use whatever amount I want)

Brown ground beef in large stock pot, dump on plate with paper towels to drain.
 Add onion, sweet pepper, celery, garlic, basil, fennel, sugar, salt, tomatoes to pot.
 Bring up to boil, reduce heat, simmer to soften celery.
 Then add drained meat.

Cook macaroni (firm, because you will add cooked macaroni to pot)
 Mix in macaroni and cheese to pot.
 When cheese melted, mix in spinach.

Makes about 8 servings.

I sometimes make this a day or so ahead without the spinach.
 Out of fridge, on stove, warm up slowly. Add spinach.

Gail Komar

Hope you all enjoy Gail's casserole recipe as much as we did. Thanks, and take care.

Mark Lewalski

Vice President and Telegraph Key Editor

President's Message



Dear Sunshine Region Members,

A Time of Transition and Opportunity in the Sunshine Region

Is it April already? It must be—I just turned 63! Time seems to fly, and over the past several months, we've seen a whirlwind of changes come together like the perfect storm. Life has a way of presenting obstacles, and some can be truly daunting.

Since joining this board, I've witnessed firsthand the challenges that life can bring. Our past President, Gene, had to step down due to health issues, followed by Eastern Division Superintendent Benita for similar reasons. In January, Jim Moore, who had been holding the line as Eastern Division Superintendent, had to step away due to personal and business obligations. More recently, Western Superintendent Don Wetmore, after years of dedicated service, has chosen to step down so someone with a fresh perspective can take the helm. And just this month, I accepted the resignation of our Northern Division Superintendent as he navigates serious health concerns for himself and his family.

Please keep these individuals in your thoughts and prayers. These are heavy challenges—running a business, facing unexpected medical diagnoses, dealing with accidents, or caring for a loved one. No one is immune to life's trials, and their contributions to the Sunshine Region have been invaluable.

Yet through all these transitions, one thing remains paramount: the strength and resilience of our membership. Thankfully, we have members willing to step up, fill the gaps, and work toward making the Sunshine Region stronger. As we restructure, you will see new faces—some familiar, some stepping into new roles—and I encourage you to welcome and support them as we continue to build a proactive and dynamic organization.

The divisions' participation is paramount to the success of the region as a whole. Together, we will continue fostering a region that is **Active, Involved, and Committed to Mentorship, Fellowship, and Community** for all our members. If you are interested in being part of this team and helping us move forward, I invite you to reach out to me at SSRPrez@NMRA.org. Let's discuss how you can contribute to making the Sunshine Region the "Best Region Under the Sun."

Thank you for your support and dedication. I look forward to working with you all as we move ahead together.

Best regards,


Andy Zimmerman

President

**The Gallery of Industrial
Marine and Urban Models**
Fine Scale Models in HO Scale

Ray Del Papa
Builder

754-423-0051
mrrratpp@aol.com



www.RobsHobbyWorld.com

Robshobbyworld@msn.com

Hours: Monday-Friday
10-530, Saturday 9-4

Rob's Hobby World


R/C Planes, Cars and Boats ~ Trains ~ Plastic Models ~ Tools,
Paints and Accessoires

8585 SW Hwy 200
unit 14
Ocala, FL 34481

352-854-2799

**FIRST COAST MODEL RAILROAD
SOCIETY**

HO & On30 SCALES DIGITRAX DCC



1414 Millcoe Road, Unit 2105
Jacksonville, FL 32225
Richard Paul
Home -(904) 223-5133
Cell - (904) 616-8110
fcMrs46@gmail.com



The Western Bay Railroad is a 950 square ft On30 layout in Port St Lucie. We meet almost every Tuesday evening. We are looking for new members to join our group. There are OP sessions & scenery that we are still working on. If you're a

modeler and serious about learning, give us a try! Go to our website or contact Al Sohl MMR als0622@yahoo.com

***'No dues, just a great experience'*
westernbayrailroad.org**



Treasurer's Message



Hello Everyone! As I write this in mid-March, I am hoping that the website will be refreshed with our 2025 Convention information. As always, our convention is the 2nd weekend in October, starting on Thursday Oct 9th and running through Sunday morning Oct 12 for a Region wide Board meeting – open to all active members.

This year's convention is going to be fantastic!! It must be, as we have had to endure an additional year of waiting for the fun. It will be great to see old friends, make new friends and have an all-around great time.

The website will have the link for the hotel room – the link will be the easiest way to insure you receive the discounted room rate. If for some reason you cannot use the link or have an issue, please email me below and we will get you registered. Register early so you will be able to lock in a room for Thurs, Fri and Saturday night.

We are planning on having the Echoes Club set up a layout in the Ballroom of the hotel so we can run some operating sessions for both beginners and seasoned pros! We will be needing some volunteers to help out as well (no heavy lifting involved 😊). If you can spare an hour or two of your time, we would greatly appreciate it – please email me if you would like to help out.

As usual, ironing out clinics and how to's will take more time but we will share those on the website as soon as they become available. I look forward to seeing everyone at

Iron Horse 2025 this October!

See you soon,

Glenn Kopriva

Treasurer

The Telegraph Key

April 2025

The Gym Isn't For Everyone...



Your health plan now covers group activities, just like it covers gym memberships.

Grouper

The Gym Isn't For Everyone...

Your health plan covers group activities, just like it covers gym memberships. NMRA Sunshine Region, Inc.'s partnership with Grouper helps you access benefits to cover the group activities that provide social connection and keep you healthy. Eligible members 65+ with qualifying plans can receive an annual benefit of \$50, plus \$20 every three months for staying engaged.

Sign up now! (GrouperGroups.com/SSR-NMRA)

Achievement Program



We have one (1) AP for the month of March, and it is Kevin Paige Sr. for Master Builder Scenery from Ponte Vedra, Florida from the Northern Division. We also have one (1) Golden Spike Award for the month, and it is Geoffrey Duncan from Ponte Vedra, Florida from the Northern Division.

So, this month lets continue with the Achievement Program Statement of Qualifications with Achievement Program Master Builder Prototype Models.

To qualify for this certificate, you must:

1. Construct an animated or static model of a prototype scene containing at least six (6) models of prototype equipment or structures. At least four (4) different type of models must be represented. They are rolling stock, railroad structures, caboose or passenger car, and a motive power. Any two (2) of the six (6) models must be scratchbuilt. The remainder must be superdetailed. Plans or photographs must be provided to verify the final prototypical appearance of each model and of the total scene.
2. Earn a Merit Award of at least 87.5 points with the above scene.
3. Prepare a written description along with photographs, documental; evidence and/or maps which will verify the actual prototype scene used as a basis for the modeled scene.
4. Provide color photos and a written description of materials and methods used to build the scene.
5. Submit a completed Statement of Qualifications (SOQ) which shall include the following:
 - > Attachments for Requirements 2 and 3 above.
 - > The signed Merit Judging forms from Requirement 2 above.
 - > The supplemental material with the photographs of both the model and the prototype attached.

That is all I have for this time around.

Ken Hoot

Achievement Program Chair

Northern Division



Sunshine Region Northern Division Meeting.

- Focus on modeling.
- Hosted by Allen Scott and Richard Segall.
- Date May 10th 2025

- Location Lake City Library West Branch
- 435 NW Hall of Fame Drive
- Doors Open at 10:00 am. The meeting will start at 10:20 am,
- Refreshments will be available. Donations accepted.
- Clinics...
- Richard Segall "Seeing the Details to Improve Your Models".
- Richard Paul Tree building clinic
- There is still room for one more clinic, so let me know if you would like to volunteer to give one.
- A Show and Tell table will also be available, so please bring a finished project.

Allen Scott alco54@hotmail.com

The Bid Bend Model Railroad Association Event.

T-Trak in the Syrup City" Setup April 4th Event **April 5, 2025**, Small open house for church members from 11-1. Breakfast and lunch are provided for all T-Trakers. The event runs all day Saturday and has no set end time; it just needs to be taken down before Sunday. The Church of Grady County Fellowship Hall is located at 1400 South Broad Street, Cairo, Georgia 39828. Contact Charles Burgess (229-378-7069) for any questions.

For the world events, look at NMRA<org Calendar: <https://www.nmra.org/calendar>.

Big Bend Model Railroad Association <https://bbmra.club/>

First Coast Model Railroad Society <http://www.fcMrs.club/>

Flager Model Railroad Club <http://www.fmrrc.com/>

The North Central Florida Model Railroad Club <https://ncfmrc.org/>

Robert Feuerstein calendar@nmra.org NMRA.org Calendar Website Support

Robert Feuerstein

Northern Division Superintendent

Eastern Division



Eastern Division Superintendent Resignation & Path Forward

(I'm running this message from Andy again since it is still applicable – Ed.)

Last Month we regrettably needed to inform you that Jim Moore had stepped down as Superintendent of the Eastern Division, NMRA Sunshine Region. We sincerely thank him for his service and dedication during his tenure and appreciate his contributions to the division and the greater SSR community. Jim Stepped in for Benita Jameson who stepped up in at a critical time to keep the division moving forward. Unfortunately, life has a way of disrupting the best of plans and family and personal health need to come first. We appreciate their dedication and willingness to serve.

With this transition, we encourage members of the Eastern Division to take this opportunity for introspection. Leadership is vital to the growth and success of our organization, and now is the time for those passionate about model railroading and the NMRA to step forward and help guide the division into the future. The continued success of the Sunshine Region depends on the engagement and support of its members, and we urge you to be part of that momentum.

We will share updates on the next steps for Eastern Division leadership soon. In the meantime, we ask for your input, involvement, and commitment to ensuring the division remains strong and active. If you have thoughts or are interested in taking on a leadership role, please reach out.

Thank you for being part of the NMRA Sunshine Region. Let's work together to keep it growing and moving forward.

Sincerely,

Andy Zimmerman

President

Western Division



The next NMRA event will be a free guided tour of the Mulberry Phosphate Museum in Mulberry, FL on April 26, 2025. See the flyer for more details.

Our Western Division AP Chair Joe Gilmartin is ready to help you move forward in the NMRA Achievement Program and answer any questions you may have. You may contact Joe at 224-637-5965 or jgilmartin@mac.com

If your club would like to host a one day workshop, please contact me directly to work out the details.

Don Wetmore

Western Division Superintendent



NMRA Sunshine Region Western Division Free Guided Tour



101 SE 1st Street, Mulberry, FL 33860

Saturday April 26, 2025 10:30 am

Located in historic Mulberry Train Depot

Learn the history of phosphate mining in the Bone Valley

View prehistoric fossil collection

See 1880s Manchester Locomotive buried for almost 80 years

See Seaboard Coast Line Caboose

Dig for shark teeth in the Dragline Dig Pile (bring a bucket & shovel)

PLEASE RSVP to Jeff "Ski" Guzowski

(954) 401-0804

jguzowski@bellsouth.net

<https://www.nmrasunshineregion.org/>

Southern Division



Greetings Southern Division

Well, I'm the relief pitcher for this month, your Southern Superintendent is truly in the South. Richard is off galivanting around in the southern hemisphere on a cruise, somewhere in the neighborhood of Australia and New Zealand. It is a vacation that is well deserved he has had a lot on his plate. So, bear with me, this is what is taking place in your division.

The ECHOES group has made some inroads with the Gold Coast Museum, the model railroad that was there, is no longer, in my understanding, just about gone. Rick Diaz tells me the museum is moving the contents of that old room out, so they may move in with their modules. He said there is nothing in writing, but a verbal agreement is in place and the museum has been very congenial. The immediate plan is to utilize their modular pieces as a temporary layout until they can create a permanent layout within the confines of where the previous model railroad was located. He said after they move the modules in, the only plan for it to be disassembled from that area is to bring the modules north to our SSR Convention in Ocala.

I have not been down to the Gold Coast in quite a while, my grandson was seven, he is now 17 ... I do remember what was there, was in somewhat poor shape, I don't believe it even ran. The entire room, floor, walls, was in need of organization and cleaning, it looked more like a storage area. I have been told that what is planned should be exceptional, considering the membership of the organization, it will be well designed and built.

For the immediate future, this coming month Rick said there is a running session at the end of April, set up on the 27th and 28th to 30th for operations and open running. They will be at the same location, at the St. Andrews church, 14260 Old Cutler Road, Miami.

South Florida Railway Museum has just gone through elections, the new administration is good for another year. There is much interest in the N scale layout, over the years, interest in N scale has grown to match a balance of the HO contingent. They have big plans, although there isn't a plan, nonetheless much is to be incorporated into the plan. It appears there shall be another reincarnation, at least it will remain a scenicked Florida based layout.

Emphasis is now on getting the museum's layout tour off the ground, Richard Berger (the guy who is supposed to be writing this) has once again taken the baton, getting individuals to open their layouts for not only museum members but anyone else who may be interested in joining the tour. To date there are a couple of outliers that have an interest in becoming part of the tour, in "O" scale at that! I think there will be at least 10 layouts on the tour.

The Palm Beach organization went through their annual open house while the South Florida Fair was in session. I know they had a slew of people through there, I mean why not, you're at the Florida Fair, hit all the buildings. In speaking to Larry Lawler, he has told me they are going through Improvements after the two week continuous running. Nothing major, just general maintenance in keeping the operations moving. Look them up on their website www.PBMRR.org.

The Florida Citrus folks are on hiatus, their stint at Plantation came to an end in January, but during their rest period follow them on their site FCMTS.org., see where they go next. Drop in on one of their breakfasts and get to know them.

If we were in the north, we would be getting ready to venture outside, start the gardening, repair ice damage, put the trains away until fall, begin our summer efforts. But since we're not and the weather is pretty temperate all year round except for May, June, July, August, September, and October, and we have a tendency to shelter in the A/C, it is time to focus on the hobby. Complete that project from last year, or whatever year, the bottom line is, do it and do it well.

Richard will be back next month, and he will hopefully, have many stories to tell about "Down Under". Until then, enjoy the hobby and Model 60.

Robert Leonard for,

Richard Berger

Southern Division Superintendent

South Florida Railway Museum

Open Dates for 2025

11:00 AM to 4:00 PM

The Museum is Open on the 2nd Saturday of the month

04 - 12, 05 - 10, 06 - 14,

07 - 12, 08 - 09, 09 - 13,

10-11, 11-08, 12-13

Follow us on our website www.sfrm.org and our
Facebook page

1300 W. Hillsboro Blvd. Deerfield Beach, FL
(The south end of the AMTRAK station in Deerfield Beach)



Home of the

**South Farmington Rail &
Mule RR**

**South Florida Regional &
Metro**

Ski's Tidbits



UPCOMING EVENTS

On Saturday, April 26th, 2025, at 10:30AM, the Western Division will be hosting a free guided tour of the Mulberry Phosphate Museum in the Historic Mulberry Railroad Depot, in Mulberry FL. The city of Mulberry is known as the Phosphate Capital of the world and the Museum is located at: 101 SE First St., Mulberry, FL 33860.

The Museum houses an outstanding collection of fossilized remains, area memorabilia and educational exhibits on the phosphate industry. There is a 44-yard drag line pile where visitors can dig in and look for sharks' teeth and prehistoric animal remains and what you find you can keep, so don't forget your shovel and bucket. Also, there is an 1880s Manchester 4-4-0 Locomotive and a Seaboard Coast Line Caboose. The locomotive was thought to be buried around the 1930s and spent almost 80 years underground before being found in 2012.

In the first Phosphate Gallery, visitors will learn all about the Phosphate industry and how it is essential to our world today. The Fossil Gallery is in the Mulberry Historic Train Depot and is home to a Prehistoric Fossil collection that was acquired from the Bone Valley Fossil Collection in Bradley, FL. Fossils of sea and land creatures include whales, dolphins, sharks, land creatures such as tortoises, rhinos, giraffes and arrowheads, all dating back millions of years. Your visit will also be an introduction to the relationship of animals remains with the modern-day Phosphate Industry. If you would like to go on the free guided tour, email or call me so I can add you to the list.

On Saturday May 10th, 2025, there will be a Northern Division Meet, at the Lake City Library, West Branch, 435 NW Hall of Fame Dr., in Lake City. The doors will open at 10AM, along with donuts and refreshments, and the Meet will begin at 10:20am. The three (3) Clinics that will be presented are: 1) Tree Building Clinic, presented by Rich Paul (SSR Northern Division Superintendent Assistant), 2) Modeling a Scrapyard, presented by Allen Scott, and 3) Producing quality models requires many things with the ability to project how the work will come together to be more than the sum of the parts. The NMRA's Judging Guidelines offer a starting point for developing this skill. This hands-on clinic with participants working in small teams aims to enhance modeler's skills in planning their work and selecting challenges for going beyond glueing parts together. The clinic seeks to expand the pool of modelers capable of producing merit award models while providing practical skills for everyone., presented by Richard Segall.

There will be a Show and Tell after the clinics, so bring your models. Your models Do Not have to be completed. If you have an unfinished model, bring it as someone might have a question on how you may have done something on your model.

We cannot charge money for the Division Meet, because it is being held in a Public Library, but there will be a donation cup available, so please put a few bucks in the cup. This Northern Division Meet will be presented by Allen Scott and Richard Segall (past Northern Division Superintendent).

If you have any questions, you can contact Allen or myself (see my info at the bottom of the page). Allen Scott's cell phone (386) 623-3030, email is alco54@Hotmail.com.

Also, Some Additional Upcoming Events you may want to check out

PINELLAS PARK: Suncoast Model Railroad Club Train Show/Open House. Saturday, April 5, 2025. SHOW-New Venue! Pinellas Performing Arts Center, 4951 78th Avenue N., Zip: 33781. 9am – 3pm. Admission: \$8.00 adults, Children \$3.00, under 11-free. Free parking. Tables: Event Planner, SMRRClub@gmail.com, 727-523-1860. OPEN CLUBHOUSE – 12355 62nd Street North, Suite A, Largo, FL 33773. Admission: FREE. www.suncoastmrrc.com

CRYSTAL RIVER: Regal Railways presents Toy Trains & Hobby Show. Florida National Guard Armory, 8551 W. Venable St., Crystal River, FL 34429. Saturday, April 12, 2025, 9:00am – 2:00pm. Admission: \$6.00 adults, children under 12 free. Vendors and operating layout. Lunch items available. Contact Joe: 727-244-1341 or visit www.regalrailways.com for more information.

Just a Reminder: The Annual Sunshine Region Convention will be held at the Hilton in Ocala, on Thursday through Saturday, October 9th- 11th, 2025.

Jeff “Ski” Guzowski – NMRA Sunshine Region Director

Cell (954) 401-0804 email: Jguzowski@Bellsouth.Net

Jeff Guzowski

Sunshine Region At Large Director



Big Bend Model Railroad Association

T-TRAK
N/HO/O Scale Modular Railroading
2 day Show!
Sat & Sun
T-TRAK-Z
Z-Scale Modular Railroading

34th Annual

Tallahassee Model Railroad Show and Sale



June 28th & 29th 2025 at the North Florida Fairgrounds





**PENSACOLA'S PREMIER HOBBY TRAIN STORE & REPAIR
CENTER**

We are a Lionel Authorized Value-Added Dealer!

**Decoders Installed & Programming Services for Lionel Legacy, ESU
LokSound, SoundTraxx, MTH DCS, Digitrax & TCS**

Some of the lines we carry:

**Kato HO & N, Peco HO & N, Micro-Trains, Kadee, Lionel, Woodland
Scenics, Digitrax Decoders & Acc., SoundTraxx Decoders, TCS
Decoders, ESU Decoders, Rokuhan Z**

**Remember do not to wait until December to check your
Christmas Trains for repairs or cleaning!**

Tucker's Train Supply

Pensacola, FL

www.TuckersTrainSupply.com

(850) 723-5390



E.C.H.O.E.S is a modular model railroad club located in Miami-Dade, Florida, dedicated to building and displaying our HO scale model railroad layout. Our purpose is to enjoy and promote the hobby of model railroading and preserve the history of railroading in South Florida. The club was started in the summer of 1985, with the goal of presenting a HO scale modular model railroad layout for display at "The Harvest Festival". Throughout the years, the layout has been displayed at regional conventions, four NMRA National Train Shows (Atlanta twice, Ft. Lauderdale, FL and Orlando), and other events in Miami Dade and Broward counties. We do running/operating sessions several times a year and welcome guests to join us. Membership is open and we welcome anyone who shares an interest and passion for Model railroading.

For more information, please contact:

Rick Diaz	rickdiaz@att.net	305 496 9266
Tracey Sanders	tassailor@mac.com	786 514 5667
Herb Ford	ehf640@gmail.com	786 375 1424



...America's Railroad Embroiderer

Serving the Railroad Industry and Hobbyists Since 1985

**We Have The Largest
Selection Of Embroidered
Products Anywhere!**

APRONS

Embroidered Aprons

BILLFOLDS

Embroidered Men's Billfolds

CAPS-HATS

Embroidered Caps

Dining Car Chef's Hats

Embroidered Engineer's Caps

SHIRTS

Embroidered Denim Shirts

Embroidered Firefighter Work Shirts

Embroidered Oxford Shirts

Embroidered Polo Style Shirts

Embroidered Sweatshirts

Embroidered T-Shirts

American Flag Embroidered Shirts

JACKETS

Embroidered Jackets

PANTS - SHORTS

Embroidered Men's Walking Shorts

TOTES - BAGS - BACKPACKS

Embroidered Cloth Attaché Cases

Embroidered Tote Bags

Embroidered Shaving / Camera Bags

TOWELS - SEAT COVERS

Embroidered Toilet Seat Covers

Embroidered Heavy Cotton Terry Towels

Embroidered Heavy Cotton Terry Golf Towels

UNDERGARMENTS

Embroidered Underwear

TIES

Railroad Embroidered Ties

**Nobody Beats
Our Quality!**

Jelsma Graphics
AMERICA'S NUMBER ONE RAILROAD PRINT SOURCE
America's Railroad Embroiderer
SERVICE SINCE 1985

HOME OF THE RAILROAD JACKET

HATS and SHIRTS

HERITAGE JACKETS

Best Prices

We also provide for Clubs!

www.jelsma.com

Jelsma Graphics
AMERICA'S NUMBER ONE RAILROAD PRINT SOURCE

Order NOW! www.jelsma.com • 904.716.0436

The Telegraph Key is an Official Publication of the NMRA Sunshine Region, Inc.

All material in this publication, except where noted, is Copyright © 2023 NMRA Sunshine Region, Inc. and may NOT be reproduced without the express written permission from the publisher. Trademarks, servicemarks, etc., where used, are the property of their owners. All Rights reserved.

You are receiving this email because you opted in when becoming an NMRA member.

Our mailing address is:

NMRA Sunshine Region, Inc.

4621 Bexley Village Dr

Land O Lakes, FL 34638

