

AMERICA'S NUMBER ONE RAILROAD PRINT SOURCE  
**Jelsma**  
 Graphics  
*...America's Railroad Embroiderer*  
 SERVICE SINCE 1985

HOME OF THE

**\$79.95\***

RAILROAD JACKET

HATS and SHIRTS

We also provide for **Clubs!**

www.jelsma.com

904-716-0436

## OFFICIAL TIMETABLE

No. 4

# Plant city

SUNSHINE REGION - 2022 CONVENTION

OCTOBER 6 – 8 2022

John Trinkle Center Plant City Campus of HCC  
 1206 N Park Road  
 Plant City, Florida



Sponsored in part by

## Rob's Hobby World

8585 SW State Road 200, Ocala, FL 34481

352-854-2799

robshobbyworld@msn.com

## WELCOME:

Welcome to the 2022 NMRA Sunshine Region , PLANT CITY SPECIAL Convention.

This year's convention is being hosted by the SSR Board of Directors and Division Superintendents. . We have spent a lot of time working hard to make this a great weekend for all of us.

We have planned OP Sessions (3), Hands-On– Clinics (3), along with first time presented Hourly Clinics, Raffle, Celebration of Models, and AP Judging.

Thursday night 7 PM, we have a mini-OP Session at the Hotel (1st floor Meeting Room) on Robert Raymond's N-Scale layout with a real Interlocking Tower. Come try your hand at running an Interlocking Tower Layout.

Friday night, 7PM—9:30PM, we will be hosting an Ice Cream at the Hotel Pool Patio.

Saturday, we have a Train Show that will be in the Main Exhibition Hall at the Trinkle Center. Later in the evening, we will be hosting our Annual Awards Banquet with an all you can eat buffet dinner with 2 guest speakers this year.

We hope you have a pleasant hotel stay and enjoy yourselves for the next 3 days of fun.

There will be a SSR Board of Directors meeting Sunday, October 9th, at 9AM in the hotels 1st floor conference room everybody is welcome to attend

Thanks you all for attending and supporting the Sunshine Region.

Jeff (Ski) Guzowski, President SSR



**www.bobthetrainguy.com**  
**Bob Bowditch**

RMB Marketing, LLC  
 Bluffton, SC 29909  
 US

World Wide Distributor of Model Train Products

**email: bob@bobthetrainguy.com**

**740 972 0171**

**Free shipping on Domestic orders over \$100.00**  
 use coupon code "FREE SHIP"



**The Villages 2023**  
**Model Train Show & Sale**

**Saturday, February 4th, 9am - 4pm**  
**Sunday, February 5th, 10am - 3pm**

- Multi-gauge operating layouts!
- Items for all gauges on sale!

**Admission: \$7**  
**Children under 12: FREE**

**SAVANNAH REGIONAL CENTER**  
 1545 N. Buena Vista Blvd.  
 The Villages, FL 32162  
 Corner of N. Buena Vista Blvd. & El Camino Real

**\$1 Off**  
 Admission  
 with this card

The NMRA Sunshine Region thanks the following businesses for supporting the NMRA Sunshine Region by the generous donation of their products to our 2022 Regional Convention. Without the help of businesses like these the Region could not sustain itself.

**Again thank you,**

- Accurail
- Berritt Hill Shop
- Blackstone Industries, LLC
- Broadway Limited Imports
- ExactRail Model Trains
- Fast Track Hobbyworks, Inc
- Jelsema Graphics
- JJ&CL Model Train Shop
- Kadee Quality PRODUCTS
- Micro engineering Company
- Microscale Industries
- Ram Track
- Rix Products
- Ron’s Books
- Tangent Scale Models
- Walthers

**Convention Schedule**

**Thursday**

**At the Holiday Inn Express**

- 9:30am OP Session at John Brennans
- 3:00pm Registration Open
- 3:30pm Celebration of Model’s check- in
- 5:30pm Registration Closed for the Night  
Celebration of Model’s check- in Closed
- 5:30pm – 7:00pm Dinner on your own
- 7:00pm Clinics Start

**Friday**

**At John Trinkle Center Plant City Campus HCC**

- 8:00am Registration Opens  
Celebration of Model’s Registration & Model Check- in
- 8:30am Clinics Start
- 10:00am Celebration of Model’s Open for Viewing  
OP session at tom Wilsons
- 11:30am Closed for Lunch
- 1:00pm Celebration of Model’s Open
- 1:00 pm Clinics Start
- 7:00 pm **Meet & Greet Ice Cream Social Located at the Hotel Pool Patio**

**Saturday**

**At John Trinkle Center Plant City Campus HCC**

- 8:00am Registration Opens
- 8:30am Clinics Start  
Celebration of Models Open for Viewing
- 11:30am Registration Closed for Lunch  
Clinics closed for Lunch  
Celebration of Models closed for lunch

<b>,Saturday</b>	<b>At John Trinkle Center Plant City Campus HCC</b>
1:00pm	Registration Opens
	Clinics Start
	Celebration of models open for viewing
2:30pm	Model Judging
6:00pm	Banquet
	Announcements
	Dinner
	Model Contest Awards
	AP Merit Certificate Awards
	Keynote Speakers
	Raffle

**HOPE YOU HAD A GREAT TIME AT THE CONVENTION**

**HAVE A SAFE TRIP HOME, THANKS FOR COMING**

**OPERATING SESSIONS** — Will be on a first come first served basis. If you did not pre-register for an OP Session contact the Administration desk to see if there are any available positions.

There is a \$20 registration fee for the John Brennan, and Tom Wilson OP Sessions. since it is better than a half day OP Session and Lunch is included.

#### **SCHEDULE**

**THURSDAY:9:30am—3:00pm** John Brennan—3216 W Marlin Ave Tampa, Fl

**FRIDAY:10:00 am** Tom Wilson—244 Westridge Road, Davenport, FL

**PROTOTYPE TOUR—** .Since the 911 disaster in New York, Washington and Pennsylvania. All the railroads have instituted a policy of no visitors to any of the railroad facilities. We are sorry that we couldn't provide you with a Proto Type tour this year.



**Largest Selection in the South**

## **Store location:**

831 NW 143rd Street

Miami Florida 33168

**TELEPHONE:** (305)-688-8868

**Fax:** (305)-948-0339

## **STORE HOURS:**

Monday - Saturday 10AM - 5PM

Closed Sunday

**YOU ARE SO CLOSE TO READY TO ROLL!!!!**

**DON'T MISS THIS CHANCE TO VISIT ONE OF THE TOP MODEL TRAIN STORES IN THE COUNTY.!!!**

**HUGE INVENTORY IN N, HO, O, and G SCALES. TONS OF DETAIL PARTS AND SCENERY !!!**

**ALL OF THE TOP BRANDS ARE IN STOCK**

**KATO, ATLAS, WALTHERS, BEADWAY LIMITED, MTH, LIONEL, ATHEARN, LGB, PIKO, MICROTRAINS, KADEE, AND MUCH MORE.**

**FOUR OPERATING LAYOUTS!!!**

**WE ARE CLOSE TO SOUTH BEACH COME FOR LUNCH OR DINNER!!!!**

**LOCATED JUST OVER 3 HOURS SOUTH OF PLANT CITY RIGHT OFF THE**

**FLORIDA TURNPIKE**

# South Florida Railway Museum

HO and N scale layouts and Memorabilia  
1300 W. Hillsboro Blvd. Deerfield Beach, FL



**Announcing the 2<sup>nd</sup> Annual SFRM Swap Meet  
November 19<sup>th</sup> at St. Paul Lutheran Church  
701 W. Palmetto Park Rd  
Boca Raton.**

**With over 40 vendors, plus layouts by the ECHOES and the  
FECRS modular groups will be set up and running.**

Follow us on our website [www.sfrm.org](http://www.sfrm.org) and our  
Facebook page  
Call 561 441 6952 for more information



## A Celebration of Models

## Room 117 A

If you have brought a model to be entered in the Celebration of Models we hope the appropriate paper work has been filled out ahead of time to expedite the entry process. If not see the model contest personnel in the Celebration Room.

### Schedule:

#### **Thursday At Holiday Inn & Suites**

3:30/5:30 am Check in Paper Work for Models

#### **Friday At John Trinkle Center**

8:00 am Check in Models  
10:00/11:30 am Open for Viewing  
11:30/ 1:00 pm Closed for Lunch  
1:00/ 5:00 pm Open for Viewing  
5:00/7:00pm Closed for BBQ Dinner  
7:00/9:30pm Open for viewing

#### **Saturday At John Trinkle Center**

9:00/11:30 am Open for Viewing  
11:30/ 1:00 pm Closed for Lunch  
1:00/ 5:00 pm Open for Viewing  
2:30 pm Model Judging  
6:30 pm Banquet – Model Contest Awards  
AP Merit Certificate Awards

### **CLINIC SCHEDULE**

**THURSDAY 10/6/2022**

#### **HOLIDAY INN EXPRESS & SUITES**

**7:00 PM to 8:15 pm**

**Micro ops**

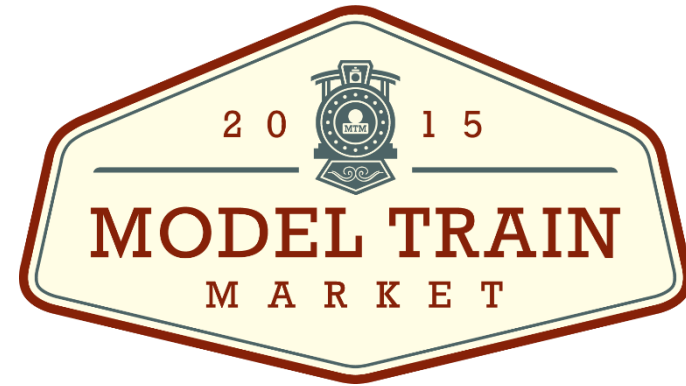
**Robert Raymond**

**7:30 pm to 10:00pm**

**Micro OP Sessions**

**Robert Raymond**

TIME	PAN AMERICAN	SILVER COMET
	TRACK 1	TRACK 2
	ROOM #116	ROOM #118
ROOMS #116 & 118 LOCATED IN FRONT OF THE BUILDING		
8:30 AM To 9:45 AM	Selecting Industries for your Model Railroad	Battery Power for Your Locomotives—Pros & Cons
Clinician	Rich Mahaney	Ray Hazen
10:00 AM To 11:30 AM	Smells for Your Model Railroad	Overview of JMRI And Using Decoder Pro
Clinician	Rich Mahaney	John Crellin
11:30 am to 1:00 pm LUNCH		
1:00 PM To 2:30 PM	Peninsulas for Your Railroad	Flat Car Removable Loads
Clinician	Rich Mahaney	Rich Paul
2:45 PM To 4:15 PM	Five Busy Railroad Traffic Locations for your Layout	A Review of Types of Bridge s
Clinician	Rich Mahaney	Terry Robinson
DINNER-SEE DINING LOCATION HANDOUT IN YOUR GOODY BAG		
7:00 PM TO 9:30 PM MEET & GREET ICE CREAM SOCIAL LOCATED AT THE HOTEL POOL PATIO		

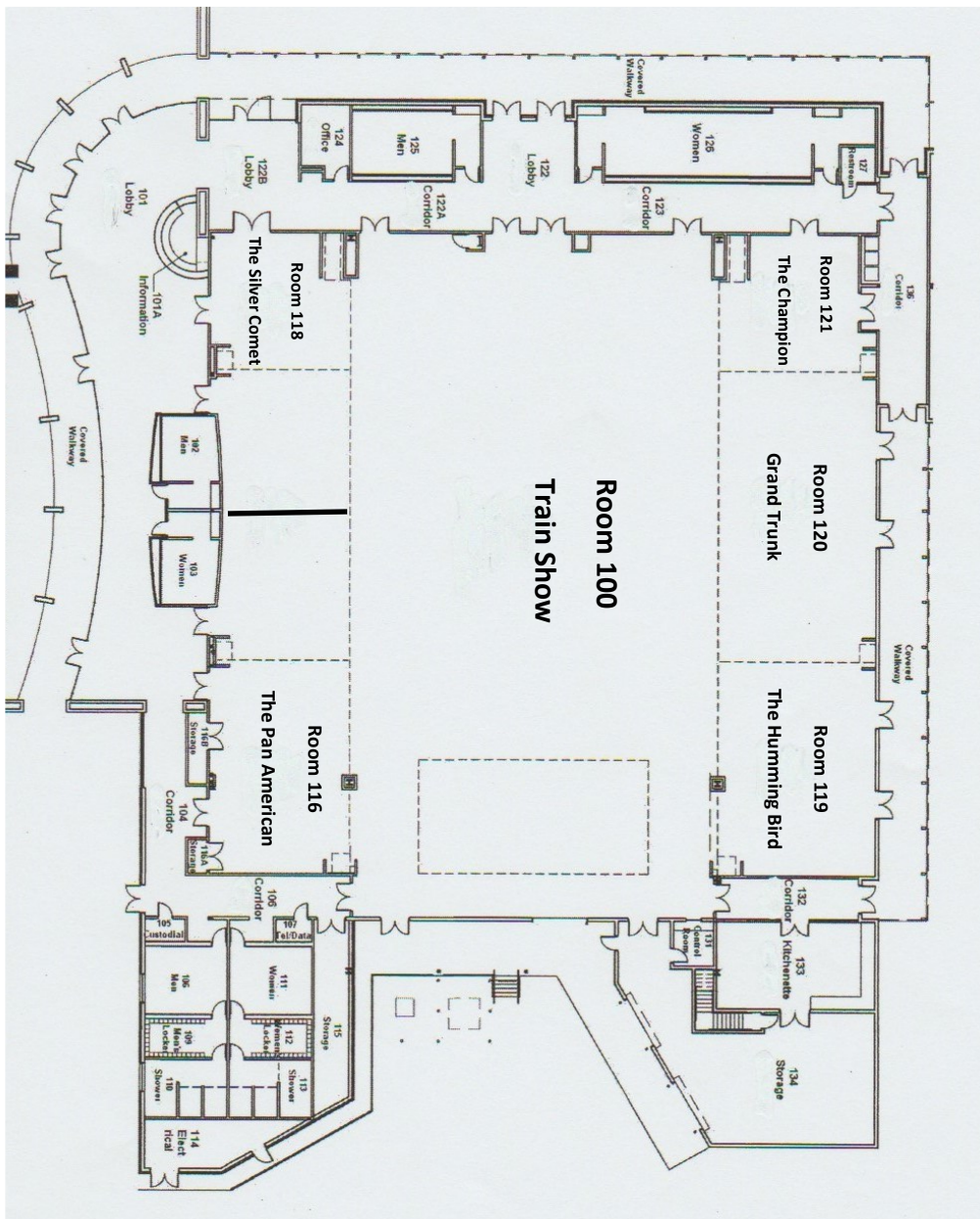


Your Source for Hard-to-Find  
Model Trains

[ModelTrainMarket.com](http://ModelTrainMarket.com)

SHIPPING Over \$99  
More Items Added Daily  
Satisfaction Guaranteed

We Also BUY Collections!



TIME	CHAMPION	HUMMING BIRD
	TRACK 3	TRACK 4
	ROOM #121	ROOM #119
<b>ROOM #119 IS LOCATED OUTSIDE BACK OF BUILDING</b>		
8:30 AM To 9:45 AM	<b>How to Build Fast Track Turnouts</b>	<b>Hands-On-Clinic Painting Clouds on your Back-drop</b>
Clinician	<b>Ken Hoot</b>	<b>Jim Robertson</b>
10:00 AM To 11:30 AM	<b>A Summer in Yellowstone National Park &amp; Grand Tetons</b>	<b>Hands-On-Clinic How to Make Trees w/Woodland Scenic Products</b>
Clinician	<b>Gene Jameson</b>	<b>Rich Paul</b>
<b>11:30 am TO 1:00 pm LUNCH</b>		
1:00 PM To 2:30 PM	<b>Train Watching Along the Way to Yellowstone for A Summer Job</b>	<b>Hands-On-Clinic 1:00pm to 3:00PM Weathering Rolling Stock &amp; Structures W/Pencils &amp; Powders</b>
Clinician	<b>Gene Jameson</b>	<b>Bob Leonard</b>
2:45 PM To 4:15 PM	<b>Signalling for Model Railroads</b>	<b>Time 3:15 to 4:15 pm Celebrating of Models/Judging Clinic Judges Must Attend Clinic</b>
Clinician	<b>Ken Farnham MMR®</b>	<b>Benita Jameson</b>
<b>DINNER—SEE DINING LOCATION HANDOUT IN YOUR GOODY BAG</b>		
<b>7:00 PM TO 9:30 PM MEET &amp; GREET ICE CREAM SOCIAL LOCATED AT THE HOTEL PATIO POOL</b>		

## SATURDAY CLINIC SCHEDULE

TIME	PAN AMERICAN	SILVER COMET
	TRACK 1	TRACK 2
	ROOM #116	ROOM #118
8:30 AM To 9:45 AM	Junction Interchanges & Diamonds for your Model Railroad	How to Flock Trees
CLINICIAN	RICH MAHANEY	KEN HOOT
10:00 AM To 11:30 AM	Imagination— How Model Railroaders Fool Us	Modeling the Pickle Industry
CLINICIAN	RICH MAHANEY	DAVIS LEIDER MMR®
<b>11:30 AM TO 1:00 PM LUNCH</b>		
<b>TRAIN SHOW—HOURS 9:00 AM TO 3:00 PM</b>		
1:00 PM To 2:30 PM	Interesting Stuff for Flat Car Loads you Can Model	How I Rebuilt My Model Railroad to be Moved David Leider
CLINICIAN	RICH MAHANEY	DAVID LEIDER MMR®
2: 45 PM To 4:15 PM	Sign Me Up (Modeling Signs and Murals)	Google Earth Past & Present
CLINICIAN	RICH MAHANEY	ROBERT FEUERSTEIN
<b>6:00 PM BANQUET</b>		
<b>HOPE YOU HAD A GREAT TIME AT THE CONVENTION</b>		

Robert Feuerstein	Google Earth Past and Present
Robert Raymond	Micro Operations Micro Operating sessions
Steve Miller	Automation Just for Fun Building the Arizona Timber Company, A Fully automated L Layout
Terry Robinson	A Review of Bridge Types
Tom Bowler	How To Fire a Steam Locomotive and Steam Garden Railroading



*Fun, Friends, Trains*

4042 Deltona Blvd.  
Spring Hill, FL 34606

**352-684-2484**

Email: [dana@danarailroadsupply.com](mailto:dana@danarailroadsupply.com)

Web Site: [danarailroadsupply.com](http://danarailroadsupply.com)

TRAIN SETS • KITS • PARTS • DECALS • DIGITRAX  
PAINTS • BOOKS • REPAIRS • LIONEL • SHIP & AIRPLANE MODELS



## Clinic

Benita Jameson	Celebrating of Models/Judging Clinic Clinic Judges <b>Must</b> attend clinic
David Leider	Modeling the Pickle Industry  How I Rebuilt My Model Railroad to be Mo
Gene Jameson	A Summer in Yellowstone National Park and the Grand Tetons
John Crellin	Overview of JMRI and Using Decoder Pro
Ken Farnham MMR®	Detection and Signal Wiring  Signaling for Model Railroads
Ken Hoot	How to Flock Trees How to Build Fast Track Turnouts
Mike Collins MMR®	My 50 Most Meaningful Published Pictures
Paul Beckstrom	Minerets & Western/Sugar Pine Lumner Company 1920s
Rat Hazen	
Rich Mahaney	Selecting Industries for Your Model Railroad Smells for Your Model Railroad Peninsulas for Your Railroad Five Busy Railroad Traffic Locations for Your Layout Junction Interchanges & Diamonds for Your Model Railroad Imagination - How Model Railroaders Fool Us <i>Interesting Stuff for Flat Car Loads You Can Model</i> <i>Sign Me Up—Modeling Signs and Murals</i>

## SATURDAY 10/8/2022

TIME	CHAMPION	HUMMING BIRD
	TRACK 3	TRACK 4
	ROOM # 119	ROOM #121
8:30 AM TO 9:45 AM	Automation Just for Fun	My 50 Most Meaningful Published Pictures
CLINICIAN	STEVE MILLER	MIKE COLLINS MMR®
10:00 AM To 11:30 AM	Detection and Signal Wiring	How to Fire a Steam Locomotive and Steam Garden Railroading
CLINICIAN	KEN FARNHAM MMR®	TOM BOWDLER
<b>11:30 am TO 1:00 PM LUNCH</b>		
1:00 PM To 2:30 PM	Building the Arizona Tim- ber Company, A Fully Automated Layout	
CLINICIAN	STEVE MILLER	
2:45 PM To 4:15 PM	Minerets & Western/Sugar Pine Lumber Company 1920s Paul Beckstrom	
CLINICIAN	PAUL BECKSTROM	
<b>6:00 PM BANQUET</b>		
<b>HACE A SAFE TRIP HOME, THANKS FOR COMING</b>		
<b>SEE YOU AT PROTOTYPE RAILS IN COCOA BEACH</b>		



CITRUS MODEL RAILROAD CLUB  
Inverness FL

## FIRST COAST MODEL RAILROAD SOCIETY

HO & On30 SCALES DIGITRAX DCC



1414 Millcoe Road, Unit 2105  
Jacksonville, FL 32225  
Richard Paul  
Home -(904) 223-5133  
Cell - (904) 616-8110  
fcmrs46@gmail.com

**Come join us for this 2 Day Show! This is one of the largest shows in N. Florida. Saturday & Sunday June 24<sup>th</sup> and 25<sup>th</sup>, 2023, 9am to 5pm, Sunday 9am to 4pm.**

June 24th & 25th 2023 at the North Florida Fairgrounds

Our show is in 2 large buildings boasting model railroad layouts from G-Scale to T-Scale (largest to smallest) including some highly detailed HO and N-Scale layouts. T-TRAK in HO, N and Z Scales, Lionel, American Flyer, and Thomas the Train exhibits!

Vendors will be on hand with new and used model trains, supplies, and accessories for every scale! Entry - \$10 per person (12-under are free) Pass is good for both days. Vendor Tables - \$35 (\$30 if an early registrant prior to May 14<sup>th</sup>, 2023 ) per 8 Foot x 30" table. **Parking is Free.**

### HANDS-ON-CLINICS

#### **Painting Clouds on your backdrop —Jim Robertson**

Simple techniques for painting clouds on your layouts backdrop. We will be using acrylic paint both spray and brushing. We will be using various tools to achieve the desired cloud formations.. Time permitting we will paint a landscape backdrop.

#### **How to Make Trees with Woodland Scenic Products—Rich Paul**

#### **Weathering Rolling Stock & Structures Using Pencils & Powders - Robert Leonard**

### BAG CHECK

Bags, Purses, & Totes are not permitted in the areas where people's assets are accessible. This includes the Celebration of Models room, Silent Auction & White Elephant Sale room. Personnel will be on duty at the door to check and hold your bags, purses & totes until you leave the room. Your belongings will be tagged with your Convention ID Number which appears on your Convention Badge. In order to retrieve